

RESEARCH

Open Access



Crawling-induced floor dust resuspension affects the microbiota of the infant breathing zone

Heidi K. Hyytiäinen¹ , Balamuralikrishna Jayaprakash¹, Pirkka V. Kirjavainen^{1,2}, Sampo E. Saari^{3,4}, Rauno Holopainen^{5,6}, Jorma Keskinen³, Kaarle Hämeri⁷, Anne Hyvärinen¹, Brandon E. Boor^{8,9} and Martin Täubel^{1*}

Abstract

Background: Floor dust is commonly used for microbial determinations in epidemiological studies to estimate early-life indoor microbial exposures. Resuspension of floor dust and its impact on infant microbial exposure is, however, little explored. The aim of our study was to investigate how floor dust resuspension induced by an infant's crawling motion and an adult walking affects infant inhalation exposure to microbes.

Results: We conducted controlled chamber experiments with a simplified mechanical crawling infant robot and an adult volunteer walking over carpeted flooring. We applied bacterial 16S rRNA gene sequencing and quantitative PCR to monitor the infant breathing zone microbial content and compared that to the adult breathing zone and the carpet dust as the source. During crawling, fungal and bacterial levels were, on average, 8- to 21-fold higher in the infant breathing zone compared to measurements from the adult breathing zone. During walking experiments, the increase in microbial levels in the infant breathing zone was far less pronounced. The correlation in rank orders of microbial levels in the carpet dust and the corresponding infant breathing zone sample varied between different microbial groups but was mostly moderate. The relative abundance of bacterial taxa was characteristically distinct in carpet dust and infant and adult breathing zones during the infant crawling experiments. Bacterial diversity in carpet dust and the infant breathing zone did not correlate significantly.

Conclusions: The microbiota in the infant breathing zone differ in absolute quantitative and compositional terms from that of the adult breathing zone and of floor dust. Crawling induces resuspension of floor dust from carpeted flooring, creating a concentrated and localized cloud of microbial content around the infant. Thus, the microbial exposure of infants following dust resuspension is difficult to predict based on common house dust or bulk air measurements. Improved approaches for the assessment of infant microbial exposure, such as sampling at the infant breathing zone level, are needed.

Keywords: Infant exposure, Indoor microbial exposure, Particle resuspension, qPCR, 16S rRNA gene sequencing

Background

Early-life microbial exposures support the homeostatic immunological development [1] and have been shown to contribute to the risk of asthma and other immunomodulatory diseases with rising prevalence [2]. In westernized societies, children spend approximately 90% of their time indoors, which emphasizes the health relevance of

exposures through indoor air. The immune system goes through rapid changes during early life, adapting and maturing in response to environmental exposures to microbes and allergens it encounters [3]. These patterns of the immune function can persist until adult age and are linked to the etiology of allergy [4]. The connection of early-life microbial exposure to several other diseases, such as childhood asthma, has been studied extensively during the past decades. Farm-related microbial exposure has been shown to have protective effects on childhood asthma [5]. On the other hand, epidemiological

* Correspondence: martin.taubel@thl.fi

¹Environmental Health Unit, National Institute for Health and Welfare, Kuopio, Finland

Full list of author information is available at the end of the article

and experimental studies have established a link between microbial exposure related to moisture damage and exacerbation of childhood asthma [6–8]. In addition, studies on gut and airway microbiota have indicated that microbial dysbiosis and prevalence and severity of asthma may be connected [9, 10].

A crucial step towards better understanding of the potential role of indoor air microbes is the ability to accurately assess an infant's exposure, and the factors contributing to it during this critical time window of immunological development. Next generation sequencing approaches offer new possibilities in exploring the possible links between microbial exposures and human microbiota in health and disease. Epidemiological studies exploring early-life exposure to microbes and their health effects typically use settled dust samples collected from flooring, mattresses, and other surfaces to assess the microbial content and diversity that small children are being exposed to. These sampling approaches are convenient and allow application in large epidemiological studies, as they do not require complex sampling equipment and home visits to collect the samples, and the sampling can be carried out by the study participants themselves. Floor and mattress dust samples represent long-term exposure more comprehensively than short-term air samples, which are affected by momentary variation generated by human activities and outdoor sources, among others [11, 12]. However, these methods have certain limitations in estimating the microbial composition and levels in the infant breathing zone (IBZ). Floor dust is only moderately representative of the microbial content in indoor air [13, 14]. Passive sampling of dust settling on elevated surfaces above floor level has therefore been introduced for indoor microbial exposure assessment, with microbial determinations based on such samples generally better reflecting the microbial content of indoor air [15], although the use of settled dust samples to represent indoor air exposure is disputed [16, 17]. All of these commonly used methods have deficiencies in estimating the real-life situation of infant inhalation exposure to microbes, which is affected also by the transient activities of children and the resuspension of microbes that their movements induce. Only few studies have tried to fill this gap, with determinations of particulate matter, fungal spores, certain allergens, and endotoxins included in those assessments [18–20].

Differences in children's activities compared to adults have a crucial effect on the quantity and quality of their exposure to environmental agents [21]. Infants and toddlers spend their time in different microenvironments, often in very close proximity to flooring and bedding surfaces, for example, when they crawl and play. Children below the age of five also ingest soil, house, and street dust (typically 100 mg/day) [22]. Their

movements stir up and resuspend floor dust, which is likely to contribute significantly to an infant's inhalation exposure to coarse-mode particles ($> 1 \mu\text{m}$ in aerodynamic diameter), microbes, pollen, and allergens [23].

The microbial samples commonly used in studies to investigate the health effects of indoor microbes, such as settled dust on indoor surfaces, may mischaracterize the inhaled microbial exposures in small children. In this study, we seek to gather hitherto non-existing knowledge on the characteristics of the infant breathing zone microbiota raised to the air from floor by crawling or walking movements. We performed chamber experiments with a simplified mechanical baby robot crawling over carpeted flooring and compared infant breathing zone samples with the commonly used proxies for microbial exposure—bulk air, representing the adult breathing zone and floor dust samples.

Methods

Study design and controlled chamber experiments

The study was designed with the aim to evaluate human inhalation exposure to resuspended floor dust particles of biological origin in controlled chamber measurements. The study was focused on quantitative and qualitative analyses of the microbiota in the IBZ during crawling resuspension sequences of a custom-built 4-kg simplified mechanical crawling infant. In parallel, we carried out determinations of dust collected from the carpets on which the robotic infant performed its crawling sequences on and—in a subset of experiments—the bulk air in the chamber, representing the adult breathing zone (ABZ). We also compared resuspension scenarios of the infant crawling and an adult walking over the carpets. The movements of the robot infant mimicked a belly crawl. A video of the robotic baby crawling can be found at https://figshare.com/articles/Crawling_Infant_Resuspension_Study/5307337 (<https://doi.org/10.6084/m9.figshare.5307337>).

Measurements were conducted in an 81.4-m^3 chamber operated at a ventilation rate of 0.66 h^{-1} and supplied with HEPA-filtered air. The chamber was maintained at a temperature of $23.11 \pm 0.77 \text{ }^\circ\text{C}$ and a relative humidity of $23.89 \pm 4.77\%$ during the measurements. The crawling and walking sequences were conducted on carpets borrowed from residents in the Helsinki-Espoo area of Finland. Carpets were used as is, without the use of artificial test dust, to allow for a more realistic exposure scenario. The residents were asked to refrain from vacuuming their carpets for a minimum period of 2 weeks, prior for their use in the chamber experiments.

In total, 17 such carpets were used in individual experiments. Dust from each carpet was collected onto one 37-mm filter cassettes with $0.8\text{-}\mu\text{m}$ pore-sized MCE (mixed cellulose ester) filters after the crawling or

walking events by vacuuming an area of 25 cm × 25 cm of the carpet with a pump at a flow rate of 15 L/min. Active air samples were collected onto 25-mm 0.8-µm pore-sized MCE filters using an IOM (Institute of Medicine) sampler operated at 10 L/min (cutoff ~ 100 µm). The IOM sampler was mounted on the head of the mechanical crawling infant, at a height of approximately 25 cm above floor level (Fig. 1a), and connected to a pump external to the chamber. All filters were conditioned at 23 °C/50% RH for 48–72 h prior to weighing before and after the experiments. Repeated crawling sequences of 10 to 20 min were combined into one integrated IBZ air sample, representing 60–100 min of total crawling action. For five carpets, we collected air samples for microbial determinations also in the bulk air at a height of 1.5 m (ABZ) concurrently with those at the IBZ. For these stationary measurements, IOM samplers and filters used were as specified in Fig. 1b.

The same five carpets were used in five additional experiments with a person walking over the carpets to compare crawling- and walking-induced resuspension scenarios and their effect on IBZ and ABZ microbial

concentrations (Fig. 1b). The adult volunteer (height 188 cm, weight 80 kg) wore a full clean suit outfit with booties (DuPont™, Tyvek Pro-Tech Suit Classic), hood, nitrile gloves, and a filter mask to prevent particle shedding from the human envelope. The same carpet dust and IOM active air sampling was performed for the walking experiments, as described for the crawling sequences, with the only difference being that the IBZ was represented by a stationary IOM sampler located at 25 cm above floor level immediately adjacent to the carpet.

The measurements for determining the microbiota in the IBZ and ABZ during resuspension events were conducted in parallel with extensive real-time monitoring of total and fluorescent particle size distributions in both sampling locations, using an optical particle sizer (OPS, model 3330, TSI, Inc., USA) and a laser-induced fluorescence-based instrument, the BioScout™ [24]. Particle size distributions, size-resolved resuspension and emission rates, regional lung deposited dose rate analysis, and additional details of the experimental setup and carpets are presented by Wu et al. [25] and (Fu et

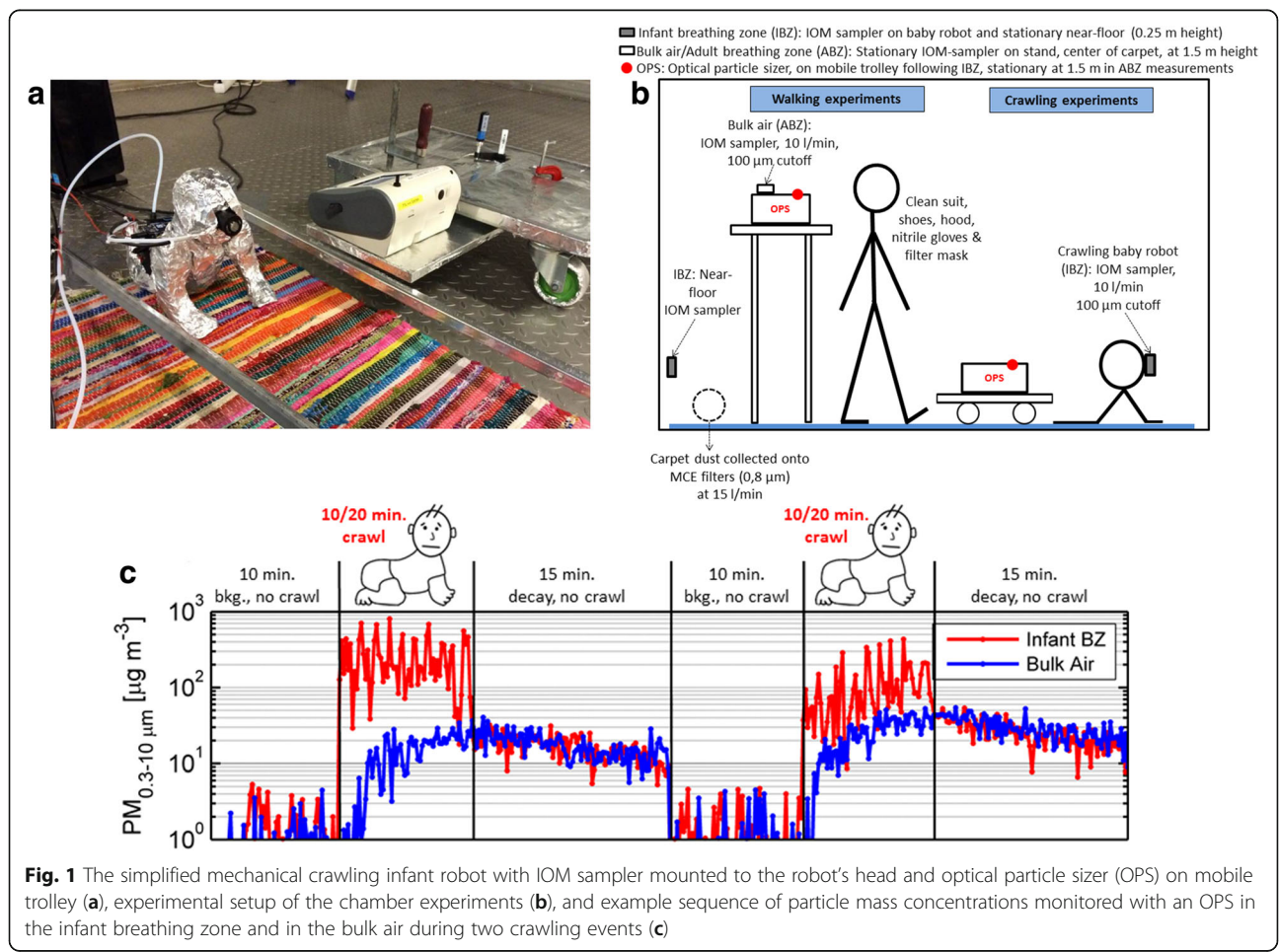


Fig. 1 The simplified mechanical crawling infant robot with IOM sampler mounted to the robot’s head and optical particle sizer (OPS) on mobile trolley (a), experimental setup of the chamber experiments (b), and example sequence of particle mass concentrations monitored with an OPS in the infant breathing zone and in the bulk air during two crawling events (c)

al: The Infant Playpen Effect: Crawling-Induced Dust Resuspension as a Major Source of Particulate Matter in the Infant Breathing Zone, in preparation). An example of particle mass concentrations ($PM_{0.3-10 \mu m}$) in both the IBZ and ABZ during the infant crawling sequence is illustrated in Fig. 1c.

Sample processing and DNA extraction

All collected filter and dust samples were stored and transferred cooled, and processed within 2 weeks after sample collection at the analyzing laboratory at THL. Minor differences in storage times between samples of different experiments are acknowledged. However, corresponding carpet dust, infant breathing zone, and adult breathing zone samples within an experiment, being used for the main comparison in this analysis, have been always stored for the same duration prior sample processing. Carpet dust was removed from the 37-mm filter cassettes and sieved through a sterile strainer (pore size 1 mm × 1 mm) to remove coarse particles and homogenize the dust sample. The dust weight was accurately determined, and 20 mg (± 5 mg) of dust was transferred into glass bead tubes for subsequent DNA extraction. The 25-mm filter membranes from the IOM samplers that were used for active air collection were directly transferred into glass bead tubes for subsequent DNA extraction.

DNA was extracted and cleaned from the samples using a Chemagic DNA Plant Kit (PerkinElmer chemagen Technologie GmbH, Germany) and a KingFisher™ mL DNA extraction robot (Thermo Fisher Scientific, Inc., Finland). The extraction was started with a bead-milling step for mechanical cell disruption [26], using a MiniBeadbeater-16 for one minute (Biospec Products, Inc., USA). Deoxyribonucleic acid sodium salt from salmon testes (Sigma-Aldrich Co., USA) [27] was added to the samples prior to extraction as an internal standard, in order to assess and correct for the presence of inhibitors and the performance of the DNA extraction. DNA was stored at -20 °C until subsequent analysis.

PCR and sequencing of the bacterial 16S rRNA gene

The extracted DNA was shipped frozen to the sequencing partner LGC Genomics GmbH (Germany), who performed the library preparation and sequencing. A pre-amplification of sample DNA was performed using primers 341F (CCTACGGGNGGCWGCAG) [28] and 1061R (CRRACGAGCTGACGAC) [29]. These PCRs included approximately 5 ng of DNA extract, 15 pmol of each primer in 20 μ L volume of MyTaq buffer containing 1.5 units MyTaq DNA polymerase (Bioline GmbH, Luckenwalde, Germany), and 2 μ L of BioStabII PCR Enhancer (Sigma-Aldrich Co.). Pre-amplification PCRs were carried out for 20 cycles using the following

parameters: 2 min 96 °C predenaturation, 96 °C denaturation for 15 s, 50 °C annealing for 30 s, 70 °C extension for 90 s, and hold at 8 °C. The V4 region of the 16S rRNA gene was then amplified using 515F/806R primers for 20 cycles [30]. The PCRs included 1 μ L of pre-amplification product, 15 pmol of each forward primer 515F N_{1-10} GTGCCAGCMGCCGCGGTAA and reverse primer 806R N_{1-10} GGACTACHVGGGTWTCTAAT (N_{1-10} indicates the 10 nucleotide inline barcodes) in 20 μ L volume of MyTaq buffer containing 1.5 units MyTaq DNA polymerase (Bioline GmbH, Luckenwalde, Germany), and 2 μ L of BioStabII PCR Enhancer (Sigma-Aldrich Co.). For each sample, the forward and reverse primers had the same 10-nt barcode sequence. The following parameters were used for the 20 cycles of PCRs: 2 min 96 °C predenaturation, 96 °C denaturation for 15 s, 50 °C annealing for 30 s, 70 °C extension for 90 s, 70 °C final extension for 90 s, and hold at 8 °C. Approximately 20 ng amplicon DNA of each sample were pooled for up to 48 samples carrying different barcodes. The amplicon pools were purified with one volume Agencourt AMPure XP beads (Beckman Coulter, Inc., IN, USA) to remove primer dimer and other small mispriming products, followed by an additional purification on MinElute® columns (QIAGEN GmbH, Hilden, Germany). Approximately 100 ng of each purified amplicon pool DNA was used to construct Illumina libraries using the Ovation® Rapid DR Multiplex System 1-96 (NuGEN Technologies, Inc., CA, USA). Illumina libraries (Illumina, Inc., CA, USA) were pooled and size selected by preparative gel electrophoresis.

Sequencing was performed on a MiSeq® with V3 chemistry (Illumina) resulting in paired-end reads with a length of 300 bp each. The libraries were demultiplexed using Illumina's bcl2fastq Conversion Software v1.8.4 (https://support.illumina.com/downloads/bcl2fastq_conversion_software_184.html) and all sequence reads processed with custom Python™ v2.7.6 scripts to sort them by sample removing barcode and amplicon primer sequences. Adapter sequences were removed from the 3' end of reads with a proprietary script discarding reads shorter than 100 bp.

Bioinformatics analyses

All 16S rRNA gene targeted amplicon reads were processed and analyzed using QIIME™ (Quantitative Insights Into Microbial Ecology) software version 1.9.1 [31] (see Additional file 1: Table S1 for the mapping file used). The raw reads were initially preprocessed by removal of artificial sequences including adapters by Cutadapt software [32] followed by trimming of bad quality reads and ambiguous sequences by Trimmomatic software [33]. The preprocessed reads were merged using FLASH (Fast Length Adjustment of SHort reads) software [34].

UCHIME [35] was employed to remove chimeras in the preprocessed reads using the USEARCH algorithm [36]. Alignment was done using *pynast* [37] with greengenes database [38] and sorted with > 97% similarity into operational taxonomic units (OTUs) using open reference OTU picking approach. Taxonomic classification was obtained using the RDP classifier [39]. Alpha- and beta-diversity values were calculated by standard metrics, such as Chao1, Simpson, Shannon, and Unifrac [40], available in QIIME. Negative and positive (bacterial mock) controls were included in the sequence processing of the samples in order to inform the decision on alpha rarefaction—done at 5926 sequences per sample—and to exclude samples closely clustering to negative control samples in PCoA plots. NMDS plots were done using *ggplot2* package [41] from *R* programming language version 3.2.4 [42] to display the beta-diversity differences between the samples.

Quantitative PCR analyses

Quantitative PCR (qPCR) utilizing previously published qPCR assays was used for quantitation of following bacterial and fungal groups: Gram-positive and Gram-negative bacteria [43]; group of *Penicillium* spp., *Aspergillus* spp., and *Paecilomyces variotii*, total fungal DNA and *Cladosporium herbarum* [44]; and internal standard salmon testis DNA [27]. QPCR reactions were performed as written in the original publications with minor modification. In the bacterial duplex assay (Gram-positive and Gram-negative bacteria), 20- μ L reaction mix were used, consisting of 10 μ L of Environmental Master Mix (Applied Biosystems Inc., Foster City, CA, USA), 1.5 μ L bovine serum albumin (2 mg/ml), 1 μ L of each forward and reverse primers, 0.4 μ L of both TaqMan probes, 3.7 μ L of nuclease-free water (HyClone Laboratories Inc., UT, USA), and finally 2 μ L of template DNA. Reactions were performed in 0.2 mL 96-well plates (Agilent Technologies Inc., CA, USA) with the Stratagene Mx3005P qPCR System (Agilent Technologies Inc., CA, USA) equipment. Positive (bacterial and fungal mock communities including qPCR target strains) and negative controls (reagent control), as well as no template controls, were included in the qPCR runs. Numbers of microbial cell equivalents (CE) in the samples were calculated using relative quantification as described earlier [45] and normalized for sampled air volume for active air samples (CE/m³) and amount of dust (CE/mg) or carpet area (CE/m²) for carpet dust samples. In Additional file 1: Table S2, details on primer sequences and qPCR conditions are provided.

Statistical analyses

Differences in Chao1 estimated species richness and Shannon diversity, as well as differences in relative

abundance of individual taxa in carpet dust versus the corresponding IBZ samples, were analyzed using pairwise sample comparison. Non-parametric statistical methods were used because the microbial data was not normally distributed. The differences between carpet dust and IBZ microbiota (Chao1 richness, Shannon index, genus level taxa summaries) were tested using Wilcoxon signed-rank test (for matched pair data) [46], and dependence between these two sample types were examined with Spearman rank-order correlations [47]. Similarly, Spearman rank-order correlations were used to examine dependence between qPCR levels in the different sample types. Statistical analyses were performed using SAS software (version 9.3, SAS Institute Inc., Cary, NC, USA). The correlations figures were plotted in *ggplot* and *corrplot* packages in *R* programming language version 3.2.4.

Differences in bacterial abundance weighted Unifrac distance were calculated using ANOSIM statistical test [48] available in QIIME platform. LefSe [49] based on linear discriminant analysis was used for the identification of discriminate features (OTUs) between carpet dust and IBZ samples.

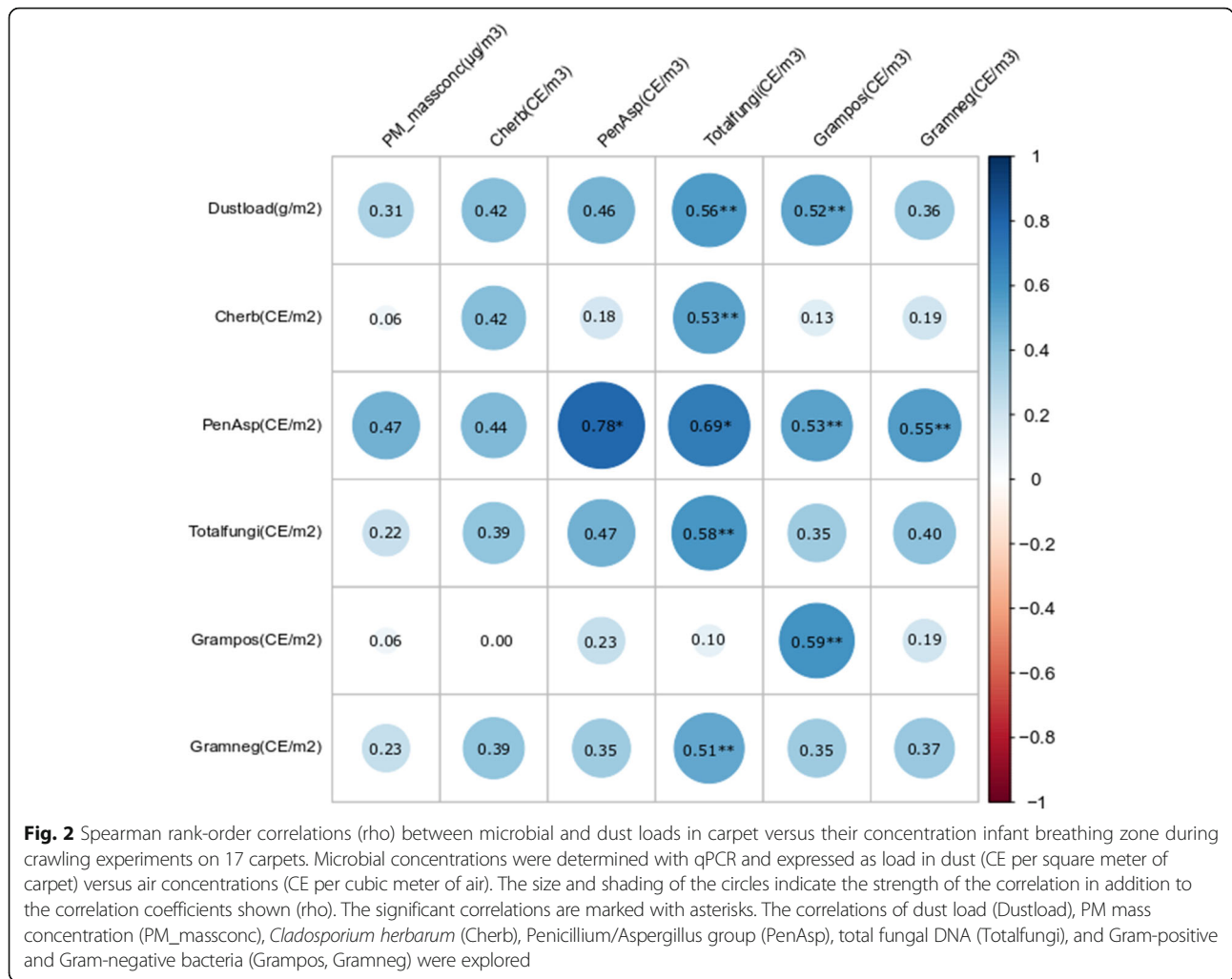
Results

Microbial concentrations in carpet dust

The dust loads from the 17 carpets used in the chamber experiments varied between 0.72 and 20 g/m² (median 4.0 g/m²). Microbial loads (CE/m²), i.e., microbial content calculated per carpet area, in floor dust determined with qPCR assays targeting several fungal and bacterial groups differed by at least two orders of magnitude among the carpets (Additional file 2). Loading of Gram-negative bacteria showed the greatest variation among the carpets, varying over three orders of magnitude. When microbial levels in carpet dust were calculated per milligram of sampled dust, differences among the carpets were somewhat smaller but still spanned two orders of magnitude or more (see Additional file 1: Table S3).

Correlations of microbial concentrations in carpet dust and infant breathing zone

Spearman rank-order correlations between microbial loads in carpets and in the IBZ were calculated for different fungal and bacterial groups based on the qPCR analysis (Fig. 2). In general, carpet microbial loads (CE/m²) showed higher correlations with the microbial concentrations in the IBZ (CE/m³) than when normalizing the dust measurements by the mass of dust, i.e., expressing the data as microbial concentrations (CE/mg of dust) (Additional file 3). The correlations between microbial loads in floor dust and in the IBZ air were significant and strong for *Penicillium/Aspergillus* group (0.78), moderate for Gram-positive bacteria and total fungi (0.59), and non-



significant and moderate or weak for *C. herbarum* (0.43) and Gram-negative bacteria (0.38). The mass of settled dust in the carpets (dust load, g/m²) correlated moderately with levels of most microbial markers in the IBZ (0.42–0.56) and weakly with Gram-negative bacteria and particle mass concentration in the IBZ.

IBZ versus bulk air (ABZ) levels during resuspension by crawling and walking

Fungal and bacterial concentrations were on average 9- to 21-fold higher in the IBZ (25 cm height) than in the ABZ (1.5 m height) during crawling experiments (Table 1). While the fold difference varied between the different carpets, the concentrations were always higher in the IBZ than ABZ. The fold differences were greater for bacteria compared to fungi. During adult walking experiments, the differences in microbial concentrations between the IBZ and ABZ were distinctly smaller than during the crawling experiments (maximum 2-fold). The IBZ microbial exposure levels to different microbial groups were on average (over 5 experiments) 1.3- to 3.4-

fold higher during crawling than during walking sequences (see Additional file 1: Table S4).

Bacterial community composition of carpet dust, IBZ, and ABZ

Differences in abundance weighted bacterial β-diversity between carpet dust, IBZ, and ABZ during crawling and walking resuspension experiments are illustrated in Fig. 3. The bacterial composition (based on weighted UniFrac distance) differed significantly ($R = 0.378$, $p = 0.001$ in ANOSIM analysis) between the carpet dust and IBZ samples in the crawling experiments (Fig. 3a). We focused our analyses here on weighted UniFrac distance, but also, in unweighted β-diversity, carpet dust and IBZ microbiota differed significantly and the effect size was even larger than using the weighted distance matrix ($R = 0.552$, $p = 0.001$). We observed significant correlation of NMDS axis score 2 between carpet and IBZ samples ($\rho = 0.69$, $p = 0.003$), indicating a separation of the individual carpet experiments along NMDS2. Floor dust, IBZ, and ABZ samples formed separate

Table 1 Means, minimum, and maximum of particulate matter (PM₁₀₀ [$\mu\text{g}/\text{m}^3$]) and microbial levels (cell equivalents/ m^3) in infant breathing zone (IBZ) versus adult breathing zone (ABZ) during both five individual crawling and walking experiments on different carpets and corresponding ratios of IBZ versus ABZ

	PM or microbial group	Infant breathing zone (IBZ)		Adult breathing zone (ABZ)		Ratio of IBZ to ABZ	
		Mean	Min-max	Mean	Min-max	Mean	Min-max
Infant crawling experiments	PM ₁₀₀ conc. [$\mu\text{g}/\text{m}^3$]	210	87–310	73	18–150	4.6	1.3–12
	Cherb [CE/ m^3]	13	4.9–29	1.7	0–8.5	–	–
	PenAsp [CE/ m^3]	250	100–560	34	0–140	7.9	4.1–13
	Total fungi [CE/ m^3]	450	91–1100	92	0–370	9.4	3.0–20
	Gram pos [CE/ m^3]	14,000	1900–23,000	700	400–970	21	4.8–47
	Gram neg [CE/ m^3]	8500	760–17,000	1300	400–3000	13	1.1–43
Adult walking experiments	PM ₁₀₀ conc. [$\mu\text{g}/\text{m}^3$]	50	22–79	43	17–70	1.3	0.4–1.9
	Cherb [CE/ m^3]	3.7	0–9.3	4.5	0–15	–	–
	PenAsp [CE/ m^3]	170	0–510	120	30–334	2.1	1.5–3.9
	Total fungi [CE/ m^3]	310	37–1100	200	30–640	1.2	0.6–1.7
	Gram pos [CE/ m^3]	5200	1400–9400	3600	830–6800	1.4	0.7–2.0
	Gram neg [CE/ m^3]	3400	2200–7100	2300	1100–6100	1.8	1.2–2.2

clusters along NMDS1 when comparing the bacterial composition of samples in the set of five crawling experiments (Fig. 3b). In addition, the individual carpet experiments separated visibly along NMDS2, but the low sample number prohibited a meaningful correlation analysis. During walking experiments, the microbial community distance of IBZ and ABZ samples was much less pronounced compared to the crawling experiments (Fig. 3c). Bacterial Chao1 estimated richness and Shannon diversity index were highest in the carpet dust, and lowest in the ABZ (Fig. 4), significantly ($p < 0.001$) different for both Chao1 estimate and Shannon index between carpet dust and IBZ (not calculated for IBZ and ABZ due to low sample numbers). Neither richness ($\rho = 0.24$) nor diversity ($\rho = 0.27$) correlated significantly between the carpet dust and the IBZ samples. *Firmicutes*, *Actinobacteria*, and *Proteobacteria* were the dominant phyla in carpet dust. In the vertical gradient above the carpet, from the IBZ to ABZ, *Proteobacteria* was increasingly abundant with distance from the floor level, due to the lower relative abundance of *Firmicutes*, which decreased from the IBZ to the ABZ air (Fig. 5a). At the phylum level, only the relative abundance of *Actinobacteria* correlated significantly between the carpet dust and IBZ sample pairs (Spearman's $\rho = 0.62$, $p = 0.01$).

Differences in the relative abundance of the most abundant (across sample types) bacterial genera were apparent (Fig. 5b): *Staphylococcus*, *Corynebacterium*, and *Streptococcus* were dominant in carpet dust samples, but not so in the IBZ and ABZ. *Micrococcus* and *Oxalobacteraceae* gen. were the genera with highest relative abundance in the IBZ and ABZ (Fig. 5b), and all of these

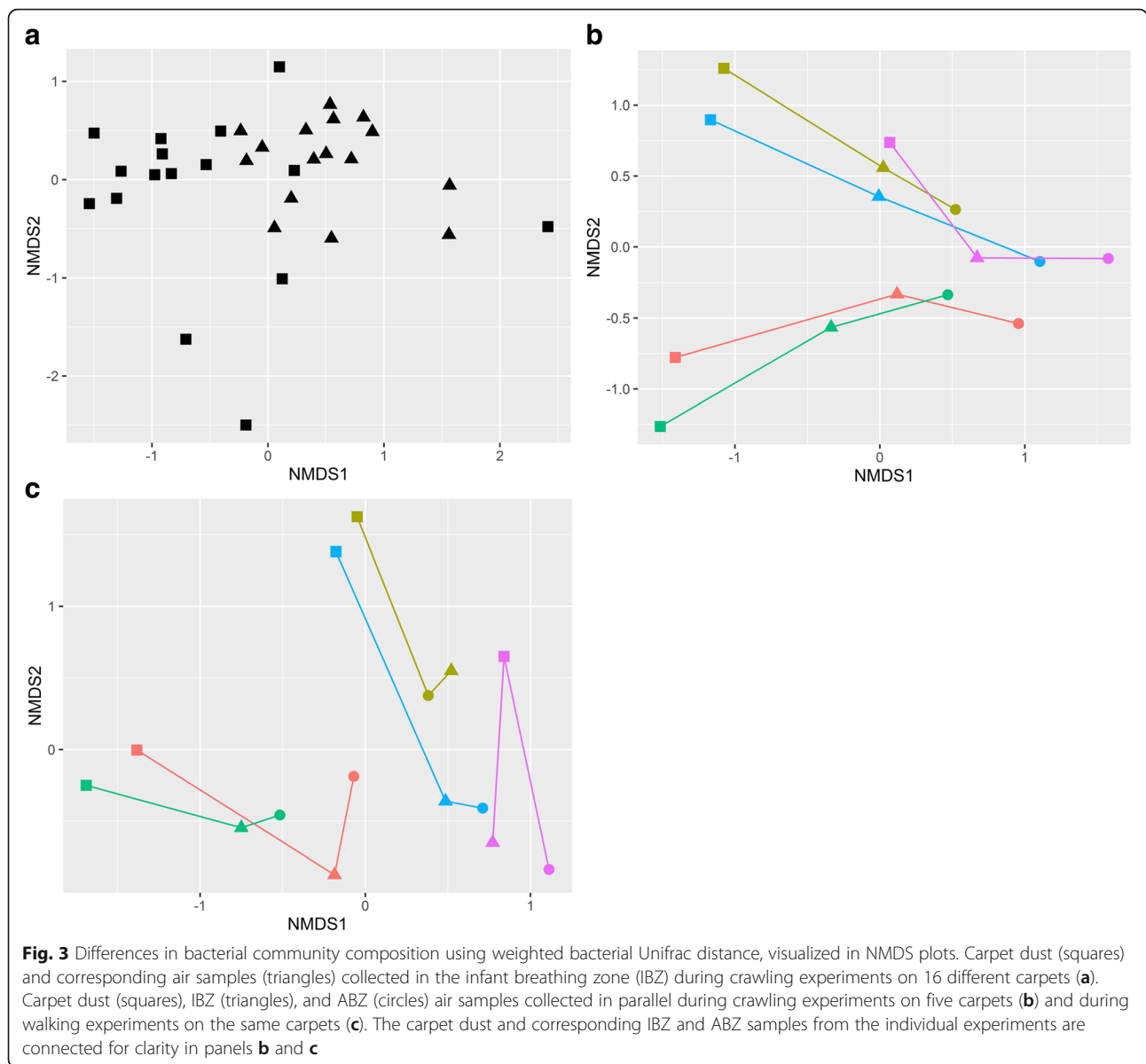
genera were far less abundant in the carpet dust than in the air samples. Spearman rank-order correlation of relative abundance of these genera in carpet dust and IBZ revealed significant (< 0.05), moderate to good correlations ($\rho = 0.51$ to 0.73) for six groups and non-significant, weak, or moderate correlations (0.23 – 0.48) for the other four genera (Additional file 1: Table S5).

LefSe analysis was performed to identify the differential features (OTUs) in carpet dust versus the IBZ. In total, 371 OTUs had significantly different relative abundance in IBZ and carpet dust (Additional file 1: Table S6). The majority of taxa with greater relative abundance in carpet dust were allocated to *Firmicutes*, *Actinobacteria*, *Proteobacteria*, and *Bacteroidales* phyla, whereas OTUs enriched in the IBZ were mostly allocated to *Proteobacteria*.

Discussion

In this study, we investigated the microbiota in the breathing zone air of a robotic infant as it crawled across the floor and monitored the effects of floor dust resuspension on an infant's inhalation exposure. We observed unique attributes in regard to the compositional and quantitative aspects of microbial exposure in the IBZ that are not predicted well by surrogate measurements that rely on floor dust or bulk air sampling in the ABZ.

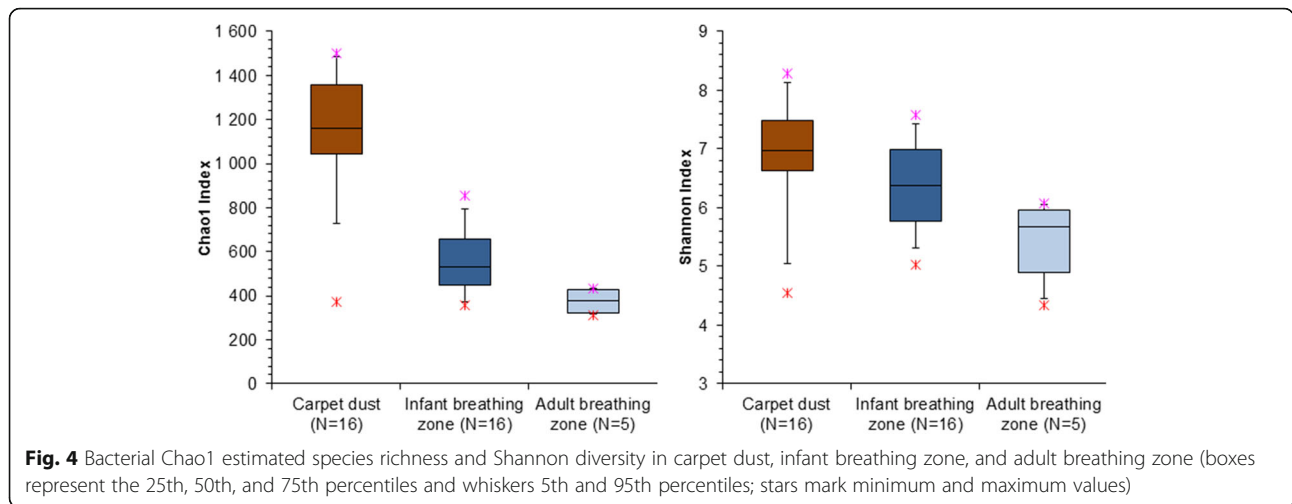
The effects of an infant crawling and a person walking on floor dust resuspension and consequently on the microbial composition in the IBZ air were investigated for the first time in our study. Our results from the qPCR and compositional bacterial amplicon sequencing analyses suggest that the IBZ microbial composition during crawling has characteristics distinct from the bulk air and floor dust microbiota. We observe that the predictive value of microbial levels determined from floor dust



on levels in the IBZ is limited and depends on the microbial group that is measured. While Gram-negative bacteria did not correlate significantly between carpet dust and the IBZ, Gram-positive bacteria and some of the more general fungal markers did. The microbial levels in IBZ (per m³ of air) correlated better with the microbial loads (i.e., microbes per floor area) than the microbial concentrations (i.e., microbes per milligram of dust) determined from carpet dust. This is probably because loads take into account the amount of dust—including the microbes associated with it—that is actually present on the carpet and available for resuspension, even though we only observed weak correlations between carpet dust load and pm PM₁₀₀ mass concentration in the IBZ. In epidemiological studies, microbial

measurements are often expressed as concentrations per milligram of dust, being more reflective of the composition of the dust and less of the amount of the potential exposure. Our results support reporting microbial loads rather than concentrations when carpet dust measurements are performed to infer inhalation exposure.

In the compositional analyses based on bacterial 16S rRNA gene amplicon sequencing, we found a clear separation of carpet dust from IBZ samples. The bacterial composition was significantly different for these two sample types, also visible in the relative abundance of the predominant taxa. At the phylum level, we observed a shift from *Firmicutes* dominance in floor dust to a *Proteobacteria* dominance in the IBZ. At the genus level, *Staphylococcus* and *Corynebacterium*, among others,

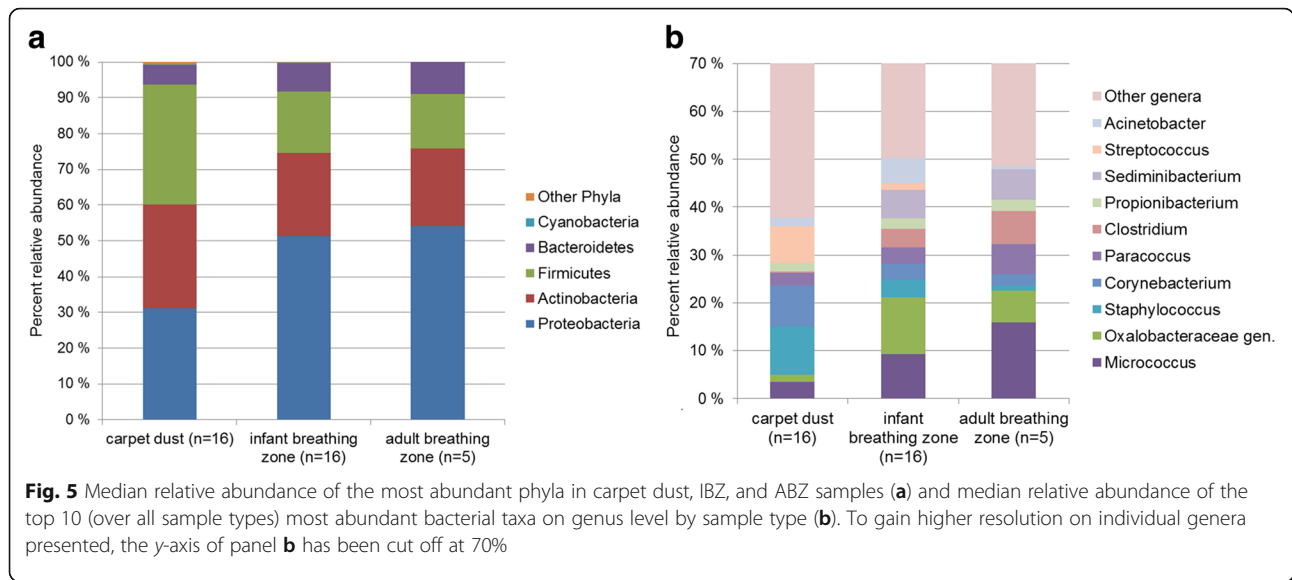


were dominant in floor dust, but less so in the IBZ. Both of these genera are representatives of the human skin microbiota, and we hypothesize that their higher relative abundance in carpet dust may be due to these bacteria being frequently carried on larger skin flakes, or squames ($40 \times 30 \times 2 \mu\text{m}$ in size) [50]. Skin flakes of this size can be readily collected via common floor dust collection techniques, as well as resuspended during human activity, but may not remain airborne long enough to reach the IBZ or ABZ due to their high settling velocities ($> 0.1 \text{ cm/s}$). We also found that Chao1 estimated bacterial richness and Shannon diversity did not correlate between carpet dust and the IBZ. This is an important finding, given that the diversity of microbial exposures early in life has become a central topic in asthma and allergy research. Our results taken together indicate that floor dust is a poor proxy of the microbial content inhaled by the infant when at the near-floor level. Assuming that the temporal effects of floor dust resuspension induced by the infant significantly contribute to the entirety of indoor microbial inhalation exposure in early life, an exposure mischaracterization is likely, when relying on the conventional residential dust sampling. However, the good correlation in the beta-diversity analysis-derived NMDS2 axis scores between carpet dust and IBZ samples retains the possibility that an association between carpet dust microbiota community composition and a health outcome is a proxy of microbial exposures at IBZ.

In a subsample of experiments, we also paired bulk air measurements in the ABZ with the IBZ and carpet dust determinations. We find a striking underestimation of microbial levels in the IBZ by ABZ measurements, by roughly a factor of 10 to 20, again depending on the microbial group targeted. This result is consistent with real-time particle size distribution analysis at both sampling heights in this same study, presented elsewhere

[25]. In compositional terms and considering infant crawling activity, we observe a uniform separation of the bacterial composition in bulk air from the IBZ and floor dust, with a further increase of *Proteobacteria* and decrease of *Firmicutes* and *Actinobacteria* relative abundance in the bulk air compared to the IBZ. We identify a vertical gradient in the relative abundance of individual bacterial taxa: for example, *Micrococcus*, *Paracoccus*, and *Clostridium* were clearly higher in their relative abundance in the bulk air than in the IBZ air. In the absence of size-resolved microbial data and a better phylogenetic resolution to the species level, we can only speculate that small aerodynamic diameter of individual spores and limited aggregation with other spores or particles may have contributed to certain bacterial taxa staying airborne for longer periods of time. Similar to conclusions made earlier for floor dust, our study also highlights the limitations of using active air or airborne settled dust sampling as a proxy for infant inhalation exposure in the near-floor environment.

We did not observe an equally pronounced effect of a person walking over the carpets on IBZ exposure levels, when compared to crawling-induced resuspension. An earlier study found a consistent and significant effect of walking over carpeted flooring on airborne fungal levels only for carpets with high (artificial) spore loading [51]. It appears that the crawling movement generates a concentrated and localized cloud of microbe-containing particulate matter in the IBZ. This observation is matched with size-resolved total and fluorescent particulate matter monitoring in these same experiments, which are reported in separate papers [25] and (Fu et al: The Infant Playpen Effect: Crawling-Induced Dust Resuspension as a Major Source of Particulate Matter in the Infant Breathing Zone, in preparation). Enhanced air mixing induced by the adult volunteer while walking in the chamber may have majorly contributed to the smaller



differences in microbial concentrations between the IBZ and ABZ compared to the crawling experiments. Also, air sampling in the IBZ during crawling sequences was done with samplers attached to the infant robot's head, whereas the IBZ sampling was done stationary, mid carpet during walking experiments, simulating a baby located on the floor while other persons walk by. This finding is in line with previous findings about the effect of movement-induced floor dust resuspension on the exposure of small children to other indoor air pollutants [18].

Based on the results of our study, the most comprehensive assessment of infant microbial exposure to inform epidemiological studies on health effects of inhalation exposure could be obtained by combining long-term integrated active air or settled dust collection close to the IBZ with bulk air sampling in the main activity and sleeping areas of the child. There is a need for methods to easily take meaningful, repeated, or long-term integrated active air or settled dust samples from the IBZ that would take into account the effect of resuspension caused by human activities. Active air sampling typically requires battery-powered equipment with small pumps; personal active air sampling on infants would be best reflecting their exposure but, in practical terms, is not feasible. Long-term active air sampling for microbes is restricted by desiccation and degradation of microbial material over time. Recent developments in sampling approaches are promising in that respect [52, 53], but studies on the “real-life” applicability of such sampling approaches, and their representativeness of IBZ exposure, are needed.

Our experiments have some limitations with respect to simulating real-life resuspension scenarios and infant exposures. We carried out a limited set of experiments

with a simplified mechanical crawling infant in a chamber to obtain samples from the IBZ and to assess the effect of crawling-induced floor dust resuspension on infant microbial exposure. This setting (a) falls short of the natural diversity and intensity of infant crawling and other near-floor activities and (b) excludes the effect of airflow patterns associated with the buoyant infant thermal plume and respiratory activities, which could affect the airborne transport of microbes around the infant. Moreover, fungal exposure scenarios were only addressed in the qPCR measurements, as active air sampling returned too many low sequence read samples in fungal ITS amplicon sequencing, which prohibited meaningful analysis of the fungal sequencing data. It should be stressed that the presented results are essentially limited by the design to the potential infant exposures by *inhalation*, while exposures by skin contact and ingestion were not addressed. We were also unable to determine size-resolved microbial concentrations as a cascade impactor was not available for the experiments. Finally, our results should be viewed in terms of microbial content associated with total suspended particulate matter (or TSP), based on the ~ 100 µm cutoff of the IOM samplers.

Conclusions

Our results suggest that carpet dust, a commonly used surrogate sample for determinations of indoor microbial exposures, is a relatively poor proxy for the microbial content inhaled by an infant during near-floor activities. The predictive value of a carpet dust determination for IBZ exposure appears to vary between different bacterial/microbial groups. The characteristics of bacterial infant breathing zone microbiota distinct from carpet dust included lower bacterial diversity and enriched relative abundance of *Proteobacteria*, while *Firmicutes* proportion

was reduced. The considerably higher microbial levels in the infant breathing zone compared to bulk room air suggest that infant crawling and subsequent resuspension of floor dust creates a concentrated and localized cloud of particulate matter around the infant which affects their associated microbial inhalation exposures. The results of this study call for advances in exposure assessment approaches that aim at understanding health effects of inhaled microbial exposure in early life.

Additional files

Additional file 1: Table S1. QIIME mapping file. **Table S2.** Details on qPCR assays included in this study. **Table S3.** Microbial concentrations as determined with qPCR in 17 carpets used in the chamber experiments, expressed as loads (cell equivalents (CE) per square meter of carpet) and as concentrations (CE per milligram of carpet dust). **Table S4.** Means, minimum, and maximum of particulate matter (PM_{100} [$\mu\text{g}/\text{m}^3$]) and microbial levels (cell equivalents/ m^3) in infant breathing zone (IBZ) during five individual crawling and walking experiments on different rugs and corresponding ratios of crawling versus walking resuspension experiments. **Table S5.** Spearman rank-order correlations between the top 10 most abundant bacterial genera in infant breathing zone air and carpet dust. **Table S6.** Differential features (OTUs) in carpet dust versus infant breathing zone air samples as determined via LEfSe analysis of 16 carpet dust and 16 corresponding IBZ samples. **Table S7.** Dust load, quantitative PCR measurements, and particle mass concentrations from crawling experiments on 17 carpets. **Table S8.** Dust load, quantitative PCR measurements, and particle mass concentrations from crawling and walking experiments on 5 carpets. (XLSX 72 kb)

Additional file 2: Concentrations of bacterial and fungal groups determined with qPCR in 17 carpets (expressed as cell equivalents (CE) per square meter of carpet) (A) and corresponding infant breathing zone levels (CE per cubic meter of air) (B) during crawling sequences. (TIFF 62 kb)

Additional file 3: Spearman rank-order correlations between dust load (g/m^2 of carpet) and microbial concentrations (CE/mg) in carpet dust versus particulate matter ($\mu\text{g}/\text{m}^3$ of sampled air) and microbial concentrations (CE/ m^3 of sampled air) in the infant breathing zone during crawling experiments on 17 carpets. Microbial concentrations were determined with qPCR. (PNG 58 kb)

Acknowledgements

We are thankful to the families who donated their carpets to this study and the Finnish Institute for Occupational Health for providing access to the experimental facilities and support during the experiments. The authors wish to thank the research analysts at THL's Living Environment and Health Unit, Katja Saarnio, Mervi Ojala, and Heli Martikainen, for their excellent laboratory assistance. Statistician Asko Vepsäläinen is acknowledged for the data management and statistical analyses and support.

Funding

This work was financially supported by the Academy of Finland (PROBIOM, grant numbers 296814 and 296817) and Juho Vainion Säätiö (201710468). BB received financial support from the U.S. Environmental Protection Agency Science to Achieve Results (STAR) Fellowship (F13D10740). The funding organizations were not involved in the design of the study and the collection, analysis, and interpretation of data or in writing the manuscript.

Availability of data and materials

The bacterial sequences were submitted in NCBI Sequence Read Archive (SRA) under the Bioproject ID PRJNA399233 with the following BioSample numbers: SAMN07527317-SAMN07527378. An analysis script for the sequence processing is available in Github (<https://github.com/balaphd/Robot-baby>). The metadata file used in these analyses is provided in Additional file 1: Table S1. The qPCR and particulate matter datasets analyzed in the current study are available as a supplement (Additional file 1: Tables S7 and S8).

Authors' contributions

BB, RH, MT, AH, JK, SS, KH, and HH designed the research. BJ performed the sequence processing and bioinformatics to the study. HH, PK, and BJ performed the statistical analyses. BB was responsible for performing the laboratory experiments, with support from RH. MT supervised the microbiology laboratory processes including sample processing, extraction, and DNA-based analyses and performed the calculation of qPCR data. HH, MT, and PK wrote the manuscript and had the primary responsibility for the final content. All authors read, edited, and approved the final manuscript.

Ethics approval and consent to participate

No animal or human data were used in the current manuscript, only a robotic baby.

Consent for publication

Not applicable.

Competing interests

The authors declare that they have no competing interests.

Publisher's Note

Springer Nature remains neutral with regard to jurisdictional claims in published maps and institutional affiliations.

Author details

¹Environmental Health Unit, National Institute for Health and Welfare, Kuopio, Finland. ²Department of Clinical Nutrition, Institute of Public Health and Clinical Nutrition, University of Eastern Finland, Kuopio, Finland. ³Aerosol Physics Unit, Faculty of Natural Sciences, Tampere University of Technology, Tampere, Finland. ⁴VTT Technical Research Centre of Finland, Tampere, Finland. ⁵Finnish Institute of Occupational Health, Helsinki, Finland. ⁶Oulu University of Applied Sciences, Oulu, Finland. ⁷Division of Atmospheric Sciences, Department of Physics, University of Helsinki, Helsinki, Finland. ⁸Lyles School of Civil Engineering, Purdue University, West Lafayette, IN, USA. ⁹Ray W. Herrick Laboratories, Center for High Performance Buildings, Purdue University, West Lafayette, IN, USA.

Received: 31 May 2017 Accepted: 18 January 2018

Published online: 02 February 2018

References

- Torow N, Hornef MW. The neonatal window of opportunity: setting the stage for life-long host-microbial interaction and immune homeostasis. *J Immunol.* 2017;198(2):557–63.
- von Mutius E. The microbial environment and its influence on asthma prevention in early life. *J Allergy Clin Immunol.* 2016;137(3):680–9.
- Goenka A, Kollmann TR. Development of immunity in early life. *J Inf Secur.* 2015;71(Suppl 1):S12–20.
- Holt PG, Jones CA. The development of the immune system during pregnancy and early life. Allergy review series VI: the immunology of fetuses and infants. *Allergy.* 2000;55(8):688–97.
- von Mutius E, Vercelli D. Farm living: effects on childhood asthma and allergy. *Nat Rev Immunol.* 2010;10(12):861–8.
- Mendell MJ, Mirer AG, Cheung K, Tong M, Douwes J. Respiratory and allergic health effects of dampness, mold, and dampness-related agents: a review of the epidemiologic evidence. *Environ Health Perspect.* 2011;119(6):748–56.
- Quansah R, Jaakkola MS, Hugg TT, Heikkinen SA, Jaakkola JJ. Residential dampness and molds and the risk of developing asthma: a systematic review and meta-analysis. *PLoS One.* 2012;7(11):e47526.
- Kanchongkittiphon W, Mendell MJ, Gaffin JM, Wang G, Phipatanakul W. Indoor environmental exposures and exacerbation of asthma: an update to the 2000 review by the Institute of Medicine. *Environ Health Perspect.* 2015;123(1):6–20.
- Durack J, Boushey HA, Lynch SV. Airway microbiota and the implications of dysbiosis in asthma. *Curr Allergy Asthma Rep.* 2016;16(8):52.
- Ipci K, Altintoprak N, Muluk NB, Senturk M, Cingi C. The possible mechanisms of the human microbiome in allergic diseases. *Eur Arch Otorhinolaryngol.* 2017;274(2):617–26.
- Hyvärinen A, Vahteristo M, Meklin T, Jantunen M, Nevalainen A, Moschandreas D. Temporal and spatial variation of fungal concentrations in indoor air. *Aerosol Sci Technol.* 2010;35(2):688–95.

12. Dillon HK, Miller JD, Sorenson WG, Douwes J, Jacobs RR. Review of methods applicable to the assessment of mold exposure to children. *Environ Health Perspect*. 1999;107(Suppl 3):473–80.
13. Noss I, Wouters IM, Visser M, Heederik DJ, Thorne PS, Brunekreef B, Doekes G. Evaluation of a low-cost electrostatic dust fall collector for indoor air endotoxin exposure assessment. *Appl Environ Microbiol*. 2008;74(18):5621–7.
14. Frankel M, Timm M, Hansen EW, Madsen AM. Comparison of sampling methods for the assessment of indoor microbial exposure. *Indoor Air*. 2012;22(5):405–14.
15. Institute of Medicine (IOM) Committee on Damp Indoor Spaces and Health. Washington (DC): National Academies Press (US); 2004. Available from: <https://www.ncbi.nlm.nih.gov/books/NBK215643/>. Accessed 24 May 2017.
16. Mazique D, Diette GB, Breyse PN, Matsui EC, McCormack MC, Curtin-Brosnan J, Williams DL, Peng RD, Hansel NN. Predictors of airborne endotoxin concentrations in inner city homes. *Environ Res*. 2011;111(4):614–7.
17. Hyvärinen A, Roponen M, Tiittanen P, Laitinen S, Nevalainen A, Pekkanen J. Dust sampling methods for endotoxin—an essential, but underestimated issue. *Indoor Air*. 2006;16(1):20–7.
18. Wang Z, Shalat SL, Black K, Lioy PJ, Stambler AA, Emoekpere OH, Hernandez M, Han T, Ramagopal M, Mainelis G. Use of a robotic sampling platform to assess young children's exposure to indoor bioaerosols. *Indoor Air*. 2012; 22(2):159–69.
19. Ramagopal M, Wang Z, Black K, Hernandez M, Stambler AA, Emoekpere OH, Mainelis G, Shalat SL. Improved exposure characterization with robotic (PIPER) sampling and association with children's respiratory symptoms, asthma and eczema. *J Expo Sci Environ Epidemiol*. 2014;24(4):421–7.
20. Sagona J, Shalat SL, Wang Z, Ramagopal M, Black K, Hernandez M, Mainelis G. Evaluation of particle resuspension in young children's breathing zone using stationary and robotic (PIPER) aerosol samplers. *J Aerosol Sci*. 2015;85:30–41.
21. Cohen Hubal EA, Sheldon LS, Burke JM, TR MC, Berry MR, Rigas ML, Zartarian VG, Freeman NC. Children's exposure assessment: a review of factors influencing children's exposure, and the data available to characterize and assess that exposure. *Environ Health Perspect*. 2000;108(6):475–86.
22. U.S. EPA. Child-specific exposure factors handbook (final report). Washington, DC: U.S. Environmental Protection Agency; 2008. EPA/600/R-06/096F, 2008
23. Sagona JA, Shalat SL, Wang Z, Ramagopal M, Black K, Hernandez M, Mainelis G. Comparison of particulate matter exposure estimates in young children from personal sampling equipment and robotic sampler. *J Expo Sci Environ Epidemiol*. 2017;27:299–305.
24. Saari S, Reponen T, Keskinen J. Performance of two fluorescence-based real-time bioaerosol detectors: BioScout vs. UVAPS. *Aerosol Sci Technol*. 2014;48:371–8.
25. Wu T, Täubel M, Holopainen R, Viitanen A-K, Vainiotalo S, Tuomi T, Keskinen J, Hyvärinen A, Hämeri K, Saari SE, Boor BE. Infant and adult inhalation exposure to resuspended biological particulate matter. *Environ Sci Technol*. 2018;52(1):237–47.
26. Haugland RA, Brinkman N, Vesper SJ. Evaluation of rapid DNA extraction methods for the quantitative detection of fungi using real-time PCR analysis. *J Microbiol Methods*. 2002;50(3):319–23.
27. Haugland RA, Siefing SC, Wymer LJ, Brenner KP, Dufour AP. Comparison of Enterococcus measurements in freshwater at two recreational beaches by quantitative polymerase chain reaction and membrane filter culture analysis. *Water Res*. 2005;39(4):559–68. <https://doi.org/10.1016/j.watres.2004.11.011>.
28. Herlemann DP, Labrenz M, Jurgens K, Bertilsson S, Waniek JJ, Andersson AF. Transitions in bacterial communities along the 2000 km salinity gradient of the Baltic Sea. *ISME J*. 2011;5:1571–9.
29. Andersson AF, Lindberg M, Jakobsson H, Backhed F, Nyre P. Comparative analysis of human gut microbiota by barcoded pyrosequencing. *PLoS One*. 2008;3(7):e2836. <https://doi.org/10.1371/journal.pone.0002836>.
30. Caporaso JG, et al. Global patterns of 16S rRNA diversity at a depth of millions of sequences per sample. *Proc Natl Acad Sci U S A*. 2011;108:4516–22. <https://doi.org/10.1073/pnas.1000080107>.
31. Caporaso JG, Kuczynski J, Stombaugh J, Bittinger K, Bushman FD, Costello EK, et al. QIIME allows analysis of high-throughput community sequencing data. *Nat Methods*. 2010;7(5):335–6.
32. Martin M. Cutadapt removes adapter sequences from high-throughput sequencing reads. *EMBnet J*. 2011;17(1):10–2.
33. Bolger AM, Lohse M, Usadel B. Trimmomatic: a flexible trimmer for Illumina sequence data. *Bioinformatics*. 2014;30(15):2114–20. <https://doi.org/10.1093/bioinformatics/btu170>.
34. Magoc T, Salzberg SL. FLASH: fast length adjustment of short reads to improve genome assemblies. *Bioinformatics*. 2011;27(21):2957–63. <https://doi.org/10.1093/bioinformatics/btr507>.
35. Edgar RC, Haas BJ, Clemente JC, Quince C, Knight R. UCHIME improves sensitivity and speed of chimera detection. *Bioinformatics*. 2011;27(16): 2194–200. <https://doi.org/10.1093/bioinformatics/btr381>.
36. Edgar RC. Search and clustering orders of magnitude faster than BLAST. *Bioinformatics*. 2010;26(19):2460–1. <https://doi.org/10.1093/bioinformatics/btq461>.
37. Caporaso JG, Bittinger K, Bushman FD, DeSantis TZ, Andersen GL, Knight R. PyNAST: a flexible tool for aligning sequences to a template alignment. *Bioinformatics*. 2010;26(2):266–7. <https://doi.org/10.1093/bioinformatics/btp636>.
38. DeSantis TZ, Hugenholtz P, Larsen N, Rojas M, Brodie EL, Keller K, et al. Greengenes, a chimera-checked 16S rRNA gene database and workbench compatible with ARB. *Appl Environ Microbiol*. 2006;72(7):5069–72. <https://doi.org/10.1128/AEM.03006-05>.
39. Wang Q, Garrity GM, Tiedje JM, Cole JR. Naive Bayesian classifier for rapid assignment of rRNA sequences into the new bacterial taxonomy. *Appl Environ Microbiol*. 2007;73(16):5261–7. <https://doi.org/10.1128/AEM.00062-07>.
40. Lozupone C, Knight R. UniFrac: a new phylogenetic method for comparing microbial communities. *Appl Environ Microbiol*. 2005;71(12):8228–35. <https://doi.org/10.1128/AEM.71.12.8228-8235.2005>.
41. Wickham H. Ggplot2: elegant graphics for data analysis. 2nd ed. New York: Springer; 2009.
42. R Core Team. R: a language and environment for statistical computing (version 3.0.2). Vienna: R Foundation for Statistical Computing; 2014. <https://www.r-project.org/>. Accessed 21 Aug 2017
43. Kärkkäinen PM, Valkonen M, Hyvärinen A, Nevalainen A, Rintala H. Determination of bacterial load in house dust using qPCR, chemical markers and culture. *J Environ Monit*. 2010;12(3):759–68. <https://doi.org/10.1039/b917937b>. Epub 2010 Jan 20.
44. Haugland R, Vesper SJ. Method of identifying and quantifying specific fungi and bacteria. US patent 6387652. 2003.
45. Haugland RA, Varma M, Wymer LJ, Vesper SJ. Quantitative PCR analysis of selected Aspergillus, Penicillium and Paecilomyces species. *Syst Appl Microbiol*. 2004;27:198–210.
46. Wilcoxon F. Individual comparisons by ranking methods. *Biometrics*. 1945; 1(6):80–3.
47. Spearman C. The proof and measurement of association between two things. *Am J Psychol*. 1904;15(1):72–101.
48. Clarke KR. Non-parametric multivariate analyses of changes in community structure. *Austral Ecol*. 1993;18:117–43.
49. Segata N, Izard J, Waldron L, Gevers D, Miropolsky L, Garrett WS, Huttenhower C. Metagenomic biomarker discovery and explanation. *Genome Biol*. 2011;12:R60. <https://doi.org/10.1186/gb-2011-12-6-r60>.
50. Weschler CJ, Langer S, Fischer A, Bekö G, Toftum J, Clausen G. Squalene and cholesterol in dust from Danish homes and daycare centers. *Environ Sci Technol*. 2011;45:3872–9.
51. Buttner MP, Stetzenbach LD. Monitoring airborne fungal spores in an experimental indoor environment to evaluate sampling methods and the effects of human activity on air sampling. *Appl Environ Microbiol*. 1993; 59(1):219–26.
52. Gordon J, Gandhi P, Shekhawat G, Frazier A, Hampton-Marcell J, Gilbert JA. A simple novel device for air sampling by electrokinetic capture. *Microbiome*. 2015;3(79) <https://doi.org/10.1186/s40168-015-0141-2>
53. Therkorn J, Thomas N, Scheinbein J, Mainelis G. Field performance of a novel passive bioaerosol sampler using polarized ferroelectric polymer films. *Aerosol Sci Technol*. 2017;51(7):787–800.

Submit your next manuscript to BioMed Central and we will help you at every step:

- We accept pre-submission inquiries
- Our selector tool helps you to find the most relevant journal
- We provide round the clock customer support
- Convenient online submission
- Thorough peer review
- Inclusion in PubMed and all major indexing services
- Maximum visibility for your research

Submit your manuscript at
www.biomedcentral.com/submit

