

RESEARCH

Open Access



16S rRNA gene-based profiling of the human infant gut microbiota is strongly influenced by sample processing and PCR primer choice

Alan W. Walker^{1,2}, Jennifer C. Martin¹, Paul Scott², Julian Parkhill², Harry J. Flint¹ and Karen P. Scott^{1*}

Abstract

Background: Characterisation of the bacterial composition of the gut microbiota is increasingly carried out with a view to establish the role of different bacterial species in causation or prevention of disease. It is thus essential that the methods used to determine the microbial composition are robust. Here, several widely used molecular techniques were compared to establish the optimal methods to assess the bacterial composition in faecal samples from babies, before weaning.

Results: The bacterial community profile detected in the faeces of infants is highly dependent on the methodology used. Bifidobacteria were the most abundant bacteria detected at 6 weeks in faeces from two initially breast-fed babies using fluorescent in situ hybridisation (FISH), in agreement with data from previous culture-based studies. Using the 16S rRNA gene sequencing approach, however, we found that the detection of bifidobacteria in particular crucially depended on the optimisation of the DNA extraction method, and the choice of primers used to amplify the V1–V3 regions of 16S rRNA genes prior to subsequent sequence analysis. Bifidobacteria were only well represented among amplified 16S rRNA gene sequences when mechanical disruption (bead-beating) procedures for DNA extraction were employed together with optimised “universal” PCR primers. These primers incorporate degenerate bases at positions where mismatches to bifidobacteria and other bacterial taxa occur. The use of a DNA extraction kit with no bead-beating step resulted in a complete absence of bifidobacteria in the sequence data, even when using the optimised primers.

Conclusions: This work emphasises the importance of sample processing methodology to downstream sequencing results and illustrates the value of employing multiple approaches for determining microbiota composition.

Keywords: 16S rRNA gene sequencing, Bifidobacteria, Infant, Intestinal microbiota, FISH

Background

The gut microbiota plays a key role in the maturation of the host immune system, and it is believed that the natural progression in bacterial colonisation of the infant gut is important for health throughout life [1–4]. Early studies of pre-weaned infants showed that the gut microbiota, particularly in breast-fed infants, was dominated by the *Bifidobacterium* genus, which formed as much as 60–90 % of the total microbiota. These findings were based on data from culture methods [5–8] and

were subsequently confirmed by studies using molecular techniques such as denaturing gradient gel electrophoresis (DGGE; [9]), quantitative real-time PCR (Q-PCR; [10]), and fluorescent in situ hybridisation (FISH; [11, 12]). The abundance of bifidobacteria in stool samples obtained from breast-fed babies correlates with the rich oligosaccharide content of breast milk [13], which is considered to stimulate the growth of *Bifidobacterium* species that possess the capability to utilise these oligosaccharides [14]. Post-weaning, the microbiota gradually changes, with the proportion of bifidobacteria declining as groups of bacteria from the *Firmicutes* and *Bacteroidetes* phyla that are able to utilise complex plant-derived polysaccharides become established [15]; it is currently thought

* Correspondence: kscott@abdn.ac.uk

¹Microbiology Group, Rowett Institute of Nutrition and Health, University of Aberdeen, Aberdeen AB21 9SB, UK

Full list of author information is available at the end of the article

that it may take up to 3 years to establish an adult-like microbiota [16].

Modern techniques, mostly involving targeted sequencing of bacterial 16S rRNA genes or direct metagenomic sequencing, have been used in many studies attempting to define the composition of the healthy adult gut microbiota [17–21]. These techniques have also been applied to the infant gut microbiota. The results from these studies have provided valuable comparisons on the microbial composition in sets of babies with different birth and early nutritional circumstances [22]. However, the lack of standardisation in the methodology used has in some cases resulted in conflicting results, with particular discrepancies in the apparent abundance of bifidobacteria (e.g. [23] versus [24]). Specific comparisons of DNA extraction methods have illustrated the importance of a mechanical lysis step (typically involving bead-beating; [25–27]), while other studies have shown that the choice of PCR primers is critical. For example, the widely used “universal” primers targeting the full-length 16S rRNA gene (27f and 1492r primers) fail to amplify more than 40 % of purified *Actinobacteria* isolates [28]. Previously reported improvements have been to optimise the 16S rRNA gene primer sequences to access the *Bifidobacterium* genus or alternatively to target different genes in order to specifically enumerate bifidobacteria [29–31]. Frank et al. developed variants of the 27f primer *in silico*, which could be used in combination to facilitate amplification of all bacteria in mixed environmental samples [32]. These primers were tested by quantifying bacterial genera in vaginal DNA samples [32]. In contrast, Sim et al. designed degenerate “bifidobacteria-optimised” primers targeting the V3–V5 regions of the 16S rRNA gene [33] and confirmed enumeration of the *Bifidobacterium* genus in infants by comparing pyrosequencing 16S rRNA gene survey data with that obtained by FISH.

In this study, we assessed the microbial profile generated using 454 pyrosequencing of the V1–V3 variable regions of 16S rRNA genes in faecal samples from two babies, comparing the effect of different DNA extraction methods and different amplification primers on the abundance of specific bacterial taxa. We found that the proportional abundance of the *Bifidobacterium* genus only concurred with data estimated by FISH when the FastDNA SPIN Kit for Soil, which includes a mechanical lysis step, was used for DNA extraction, followed by the use of a broadened “universal” forward PCR primer set. In contrast, we show that the widely used 27f primer, which was included in the standard operating procedures released by the Human Microbiome Project [21], and non-mechanical lysis-based DNA extraction kits are sub-optimal for samples containing high levels of *Actinobacteria* and thus cannot be recommended for use with faecal samples, particularly those from infants.

Results and discussion

Determination of microbiota composition from 16S rRNA gene sequences is highly dependent on methodology

Previous work has demonstrated that microbial compositional profiles determined using 16S rRNA gene sequencing are subject to several technical/methodological biases [34]. Therefore, we set out to compare the 454 sequence data arising from two different, widely used, DNA extraction methods, and using different PCR primer sets aimed at the commonly targeted V1–V3 variable regions of the 16S rRNA gene.

In method 1, using our standard methodology, DNA was extracted from samples using the FastDNA SPIN Kit for Soil, but we also compared the effect of extending the initial bead-beating time (for mechanical disruption of cells) from the recommended 30 s to 2 min and 5 min time periods. The extraction efficiencies for different bacterial genera were rapidly assessed by quantifying the DNA by Q-PCR, using the generic UniF/R primer sets for all bacteria or specific primers for bifidobacteria, *Bacteroides* and *Lachnospiraceae* (Table 1). The detection of all bacterial groups increased when the cell disruption time was increased from 30 s to 2 min (Additional file 1: Figure S1). A further increase to a 5-min disruption time had little additional effect and was in fact counterbalanced by an associated decrease in detection of other taxa (determined following 16S rRNA gene sequencing; Additional file 1: Figure S2), possibly due to degradation of DNA released from lysed cells during extended bead-beating. For baby N-BF (natural birth, solely breast-fed), 30 s of bead-beating gave lower proportional abundances of bifidobacteria and higher proportional abundances of *Clostridia* and *Firmicutes* than 2 or 5 min bead-beating (Additional file 1: Figure S2b), while the differences for baby C-MF (born by C-section and breast-fed for 4 weeks, fed a mixed bottle/breast milk diet for weeks 5–10; and formula-fed from week 11) were much less marked. Subsequent DNA extractions from infant samples therefore involved bead-beating for 2 min, in 4 × 30 s bursts, with storage on ice between homogenisations.

In order to compare the effect of storage and DNA extraction method, DNA was extracted from a frozen aliquot of one faecal sample using both the FastDNA SPIN Kit for Soil (2-min bead-beating time; method 1) and the QIAamp DNA stool mini kit, which does not include a mechanical disruption step, following the manufacturer’s instructions (method 2). Using extraction method 1, the thawed faecal sample (stored frozen at –20 °C for 3 months) gave the same proportion of bifidobacteria as the original non-frozen, freshly extracted sample (Additional file 1: Figure S3). However, despite being the dominant genus when processed using method 1, no bifidobacteria were detected in the aliquot of this

Table 1 Primers used for PCR amplification (and prior to 454 pyrosequencing)

Primer name	Primer sequence	Target group/specificity	Reference
Forward primers			
27f ^a	AG AGTTGATC CTGGCTCAG	Universal	Methé et al. [21, 53]
27f-YM ^b	AG AGTTGATY MTGGCTCAG	Universal	Satokari et al. [35]
27f-Chl ^c	AGAATTTGATCTTGGTTCA	Universal/ <i>Chlamydiales</i>	Frank et al. [32]
27f-Bor ^c	AGAGTTTATCCTGGCTTAG	Universal/ <i>Borrelia</i>	Frank et al. [32]
27f-Bif ^c	AGGGTTCGATTCTGGCTCAG	Universal/ <i>Bifidobacteriales</i>	Frank et al. [32]
27f-Ato ^c	AGAGTTCGATCCTGGCTCAG	Universal/ <i>Atopobium</i> group	Frank et al. [32]
Bif164-f	GGGTGTAATGCCGGATG	Bifidobacteria	Satokari et al. [35]
Reverse primers ^d			
Bif662-r	CCACCGTTACACCGGAA	Bifidobacteria	Satokari et al. [35]
534r	5' ATTACCGCGGCTGCTGG	Universal	Muyzer et al. [55]
Q-PCR primers ^e			
Bif spp for	TCGCGTCYGGTGAAAG	Bifidobacteria	Rinttilä et al. [56]
Bif spp rev	CCACATCCAGCRTCCAC	Bifidobacteria	Rinttilä et al. [56]
UniF	GTGSTGCAYGGYGTCTCA	Universal	Fuller et al. [57]
UniR	ACGTCRTCCMCNCTTCTC	Universal	Fuller et al. [57]
Bac303F	GAAGGTCCCCACATTG	<i>Bacteroides</i> spp.	Bartosch et al. [58]
Bfr-Fmrev	CGCKACTGGCTGGTTCA	<i>Bacteroides</i> spp.	Ramirez-Farias et al. [51]
Erec482F	CGGTACTGACTAAGAAGC	Cluster XIVa	Rinttilä et al. [56]
Erec870R	AGTTTYATTCTTGCGAACG	Cluster XIVa	Rinttilä et al. [56]

^aPrimer 27f was not used in this study but is shown for comparison and to indicate the positions of the three mismatches with the *Bifidobacteriales* 16S rRNA gene (in bold)

^bSame as primer 7-f in Satokari et al. [35] and 27f-YM in Frank et al. [32]. Contains two degenerate positions but still has two mismatches with the *Bifidobacteriales* 16S rRNA gene (in bold). The fusion primer used also contained the 454 adaptor "A" sequence—see "Methods" section for full details

^c27f-Chl—optimised for *Chlamydiales*; 27f-Bor—optimised for *Borrelia* group; 27f-Bif—optimised for *Bifidobacteriales*; 27f-Ato—optimised for *Atopobium* group. The fusion primers used also contained the 454 adaptor "A" sequence—see "Methods" section for full details

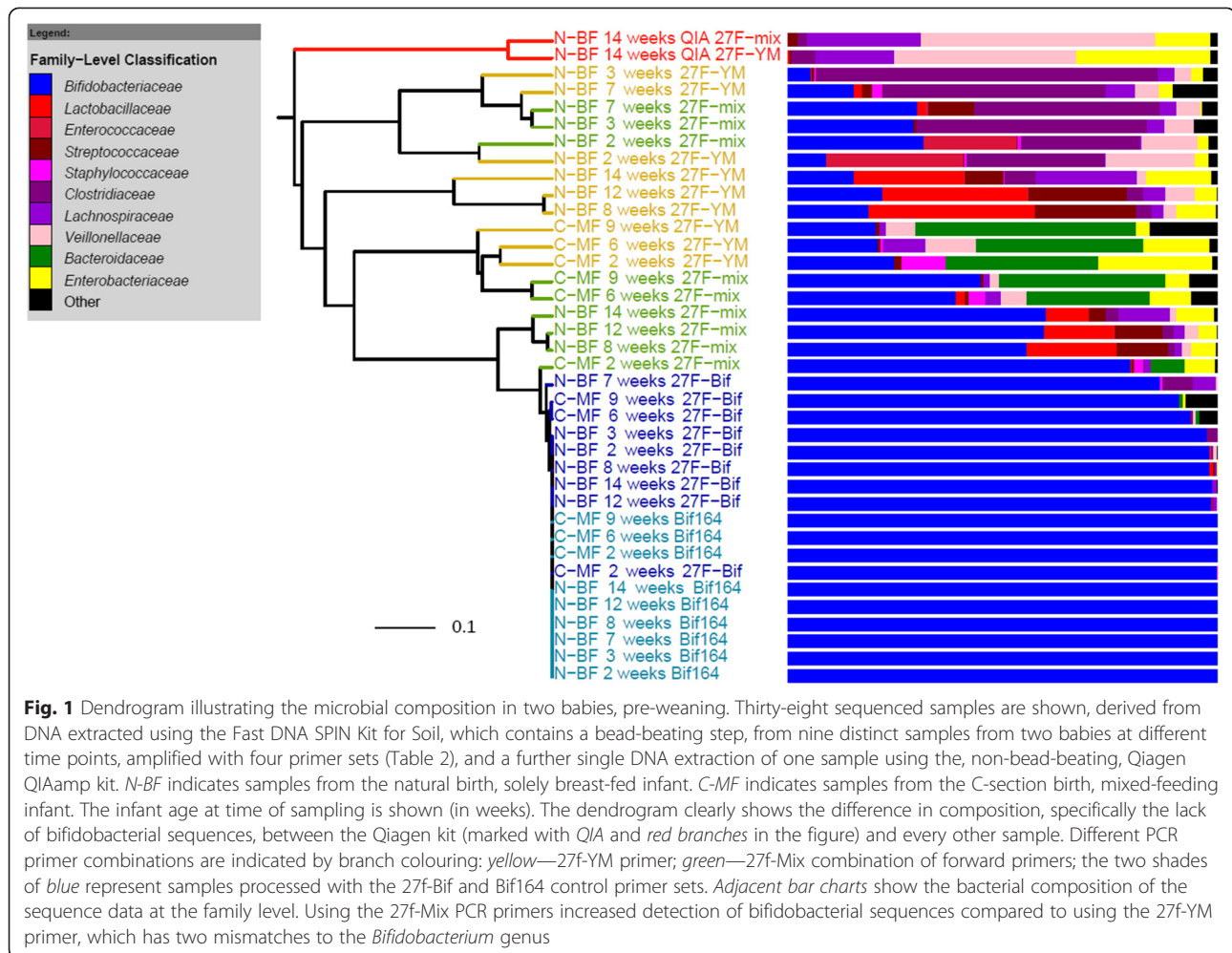
^dThe reverse primers for sequencing also contained the 454 adaptor "B" sequence and 12-base Golay barcodes. See "Methods" section and Additional file 1: Table S1 for full details

^eThe Q-PCR annealing temperatures used were 60 °C

frozen sample when DNA was extracted using method 2 (the QIAamp DNA stool mini kit), regardless of which "universal" PCR primer sets were subsequently employed (Fig. 1). Indeed, the dominant bacterial family in the DNA sample extracted using method 2 was *Veillonellaceae*, comprising 40–50 % of the total bacteria detected, despite being a minor component (<5 %) in samples extracted using method 1 (Additional file 1: Figure S3). *Lactobacillaceae* were also undetectable when method 2 was used for DNA extraction despite otherwise comprising >25 % of the bacterial composition when DNA was extracted using method 1 prior to 16S rRNA gene sequence analysis. The relative increase in abundance of *Lactobacillaceae* in the sample that had been stored frozen was countered by a decrease in *Lachnospiraceae*. The choice of DNA extraction method therefore had a much greater effect on the apparent microbiota composition than did storage of the sample for 3 months at –20 °C prior to DNA extraction. Effective recovery of bifidobacterial sequences depends on the DNA extraction process incorporating a bead-beating step. The

QIAamp kit, employed following the manufacturer's extraction protocol, was clearly inadequate for extracting DNA from faecal samples for the purpose of profiling the total bacterial community using 16S rRNA gene sequencing.

Analysis of 16S rRNA genes by sequencing relies on a PCR amplification step. Standard "universal" primers such as 27f are routinely used, often with the assumption that the amplification efficiency will be approximately the same for all bacteria. We tested this assumption by comparing the results generated using a standard primer set, an optimised mixed primer set, and bifidobacteria-specific primers (Table 1). The mixed forward primer set (27f-Mix; Table 2) contains five different forward primers, four of which are specific for different bacterial groups, including bifidobacteria, that have sequence mismatches with the generic forward primer 27f (Table 1) [32] and also with the improved primer 27f-YM [35], used here. The efficiency of the bifidobacteria-specific primer in this mix was verified by comparing the data generated using only this forward primer (27f-Bif) with that obtained using an



established set of primers for bifidobacteria detection (Bif164f plus Bif662r; [35]).

The compositional differences observed using the different primer sets were marked (Table 2, Fig. 1). As expected, the pyrosequencing 16S rRNA gene data generated using the primer combinations specific for bifidobacteria (27f-Bif/534r or Bif164f/Bif662r; Table 1) resulted in most of the sequences obtained being derived from *Bifidobacterium* species. All sequences amplified using the established bifidobacteria-specific primer set (Bif164/Bif662r) corresponded to bifidobacteria, while the 27f-Bif/534r combination was slightly less specific, with 4.5 % of the resulting sequences not identified as bifidobacteria (Table 2). The mixed forward primer set (27f-Mix) picked up on average 30 % more bifidobacteria than the single 27f-YM primer (Table 2), with a proportional reduction in some of the other bacterial genera enumerated. The specific profile generated from different babies clearly shows that the calculated proportional abundance of bifidobacteria depends not only on inter-individual variation but also crucially on primer choice.

The use of the mixed forward primer (27f-Mix) significantly increased (at least doubling) the proportion of bifidobacteria detected compared to the single “universal” primer 27f-YM, while there was little difference in the detection of other bacterial genera (Fig. 2). Comparing the average proportional abundance of bifidobacteria in both babies at all ten time points, detected using the two primer sets, revealed that significantly fewer bifidobacteria sequences were detected with the basic primer 27f-YM ($p < 0.001$).

Longitudinal bacterial diversity in two babies—comparing 16S rRNA gene pyrosequencing and fluorescent in situ hybridisation (FISH) data

Selected faecal samples from two of the babies, pre-weaning, were analysed by both 16S rRNA gene pyrosequencing and FISH in order to compare the bacterial composition detected using the two techniques. Reassuringly, the data generated using both techniques showed considerable overlap in the taxa that were detected, despite the fact that both techniques have distinct inherent

Table 2 Mean percentage of bacteria in specific families detected following 454 sequence analysis using the different primer sets across all samples

	Primer sets			
Forward primer	27f-YM ^a	27f-Mix ^b	27f-Bif ^c	Bif164 ^d
Reverse primer	534r	534r	534r	Bif662-r
Family	Percentage of bacteria detected per family			
<i>Bifidobacteriaceae</i>	17.19 ± 2.37	47.30 ± 4.26	95.53 ± 1.25	100 ± 0.000001
<i>Lactobacillaceae</i>	16.03 ± 4.61	8.59 ± 2.58	0.07 ± 0.05	0 ± 0.00
<i>Enterococcaceae</i>	2.01 ± 1.71	1.31 ± 1.13	0.02 ± 0.02	0 ± 0.00
<i>Streptococcaceae</i>	9.41 ± 2.43	4.83 ± 1.08	0.11 ± 0.07	0 ± 0.00
<i>Staphylococcaceae</i>	1.07 ± 0.56	0.44 ± 0.22	0.04 ± 0.04	0 ± 0.00
<i>Clostridiaceae</i>	16.02 ± 5.27	10.65 ± 4.04	0.74 ± 0.48	0 ± 0.00
<i>Lachnospiraceae</i>	9.54 ± 2.40	8.60 ± 3.06	1.02 ± 0.43	0 ± 0.00
<i>Veillonellaceae</i>	5.38 ± 3.04	3.92 ± 0.91	0.13 ± 0.07	0 ± 0.00
<i>Bacteroidaceae</i>	10.15 ± 4.62	8.48 ± 3.74	0.24 ± 0.15	0 ± 0.00
<i>Enterobacteriaceae</i>	10.62 ± 1.90	3.80 ± 0.66	0.04 ± 0.03	0 ± 0.00
Other	2.56 ± 0.95	2.07 ± 0.56	2.05 ± 0.97	0 ± 0.00

Values given are the mean of all data, plus or minus SE of the mean. Data results from analysis of samples from two babies ages 2–14 weeks, at 17 time points, extracted using method 1 (FastDNA SPIN Kit for Soil) and amplified with four primer sets giving 68 sequence datasets. Average number of sequences per sample = 1645

^aThe degenerate primer 27f-YM sequence has two mismatches with the *Bifidobacterium* genus

^b27f-Mix—4:1:1:1:1 molar mix of forward primers (27f-YM, 27f-Chl, 27f-Bor, 27f-Bif, 27f-Ato, respectively)

^cSpecific for bifidobacteria but designed to have similar amplification efficiency as the other primers

^dStandard specific primers for detection of bifidobacteria

advantages and biases. 16S rRNA gene sequencing can only be considered semi-quantitative due to factors such as rRNA operon copy number variation, and as such, data must be presented as proportional abundances rather than absolute abundances. FISH data has the advantage of enabling the actual bacterial load in the samples to be estimated. Even the very early 2-week samples contained more than 10⁹ bacteria/g faeces, and although there were some fluctuations, numbers remained relatively constant throughout the pre-weaning period (Additional file 1: Figure S4).

The two babies had very different bacterial profiles, and it took between 3 and 7 weeks for the infant microbiota to stabilise. Although the panel of FISH probes had previously been shown to cover 80 % of the microbial species present in adult faecal samples [36], more than 50 % of the bacteria were unidentified in early samples from baby N-BF (Fig. 3c; Additional file 1: Figure S5). The population of bifidobacteria increased steadily to the 14-week time point, when approximately 60 % of the bacteria present in baby N-BF were bifidobacteria and *Bacteroides* populations remained undetectable (Fig. 3a, c). In contrast, with baby C-ME, the maximum population of bifidobacteria (>60 %) was detected at the 2- and 4-week time points (Fig. 3b, d; Additional file 1: Figure S5). During the transitional 5-week period between the introduction of formula-feeding and the complete withdrawal of breast milk,

the bifidobacteria population decreased finally representing less than 10 % of the total microbiota (Additional file 1: Figure S5), while *Bacteroides* species became prevalent by 9 weeks and were maintained at >50 % of the total population until just before weaning. These findings are broadly consistent with previous studies of formula-fed versus breast-fed infants [7, 9, 37, 38].

The 16S rRNA gene sequence data using the 27f-Mix/534r primer combination revealed the “missing” bacterial diversity in the samples that was not detected using FISH. It was particularly useful in determining the bacterial species present in the 2- to 5-week samples from baby N-BF, when less than 50 % of the bacteria present had been detected using the standard set of FISH probes (Fig. 3c). The sequencing data indicated that these early samples were characterised by spikes in specific bacterial groups. For instance, the 2-week sample still contained >20 % of *Enterococcaceae* (99 % similarity to *Enterococcus faecalis*) and 15 % *Veillonellaceae* (100 % similarity to *Veillonella* spp.). These bacteria are among the early colonisers that create the anoxic conditions in the gut, prior to colonisation with more obligately anaerobic bacteria [7, 9]. The family *Clostridiaceae* formed between 20 and 30 % of the total microbial composition in the 2- to 5-week samples. However, sequence data classification showed an early abundance (20 %) of bacteria related to *Clostridium perfringens* (98 % similarity) being replaced by >40 % *Clostridium butyricum*-like species

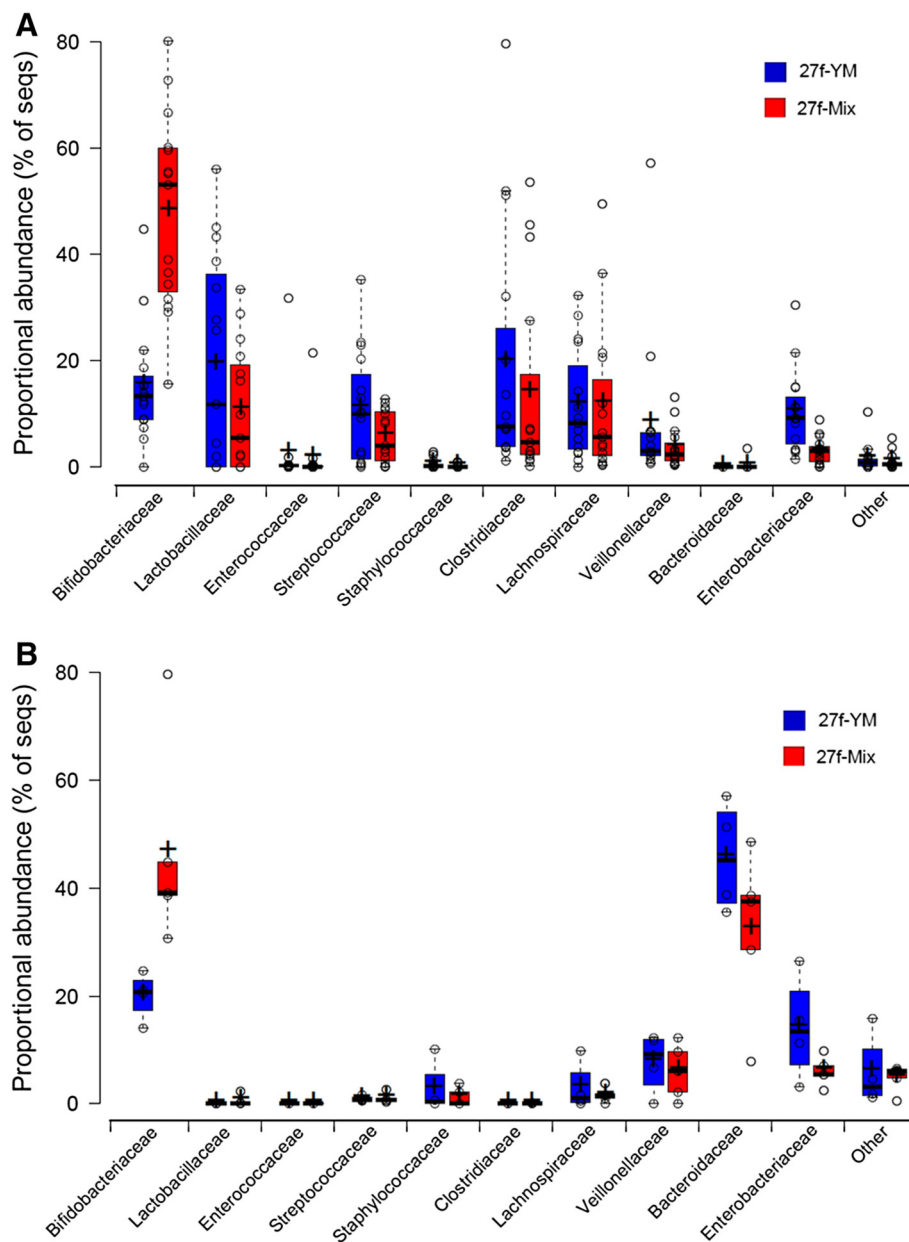
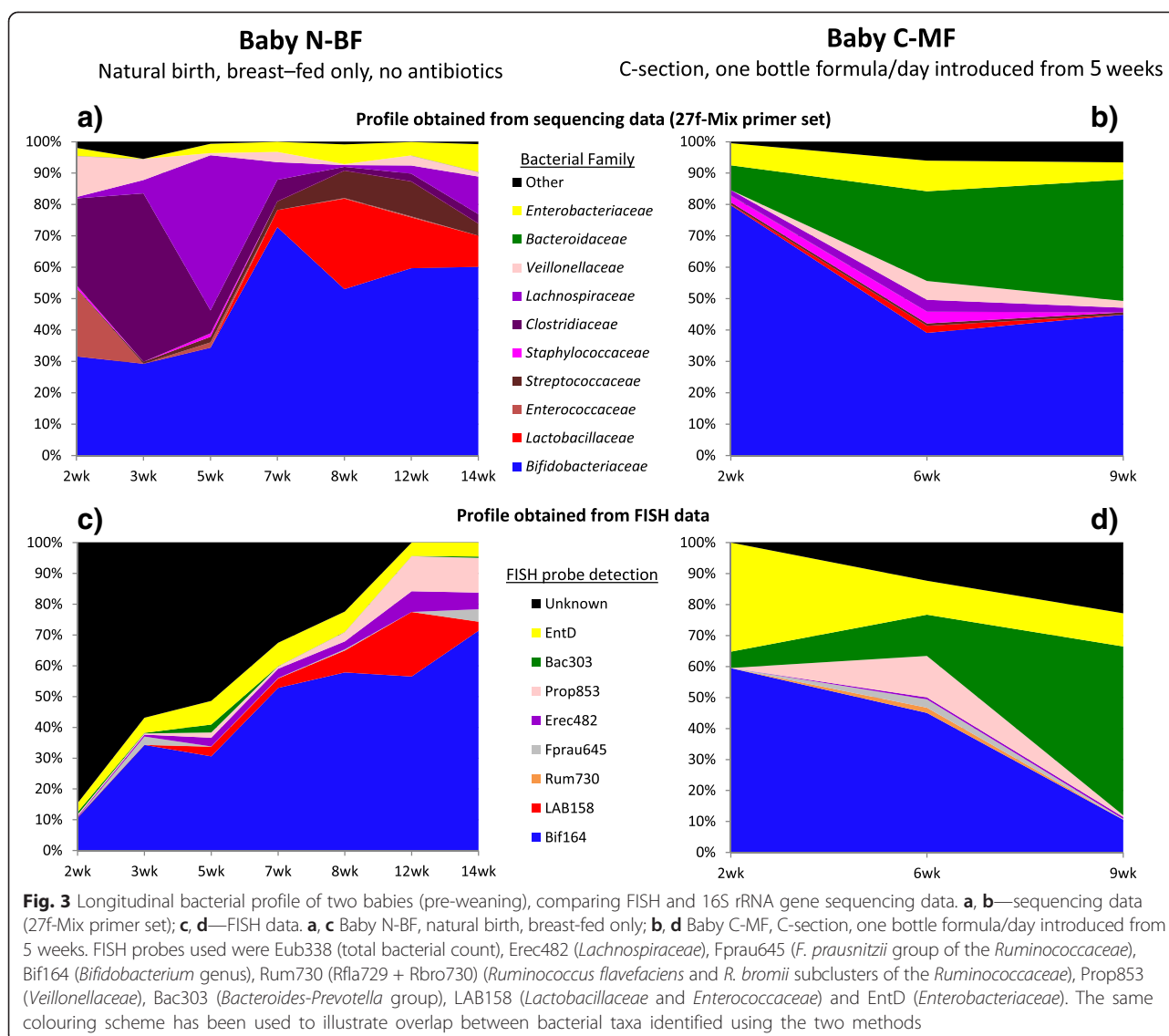


Fig. 2 Comparison of bacterial families detected in faecal samples from two babies. Sequence data is based on 16S rRNA gene amplicons obtained using the 27f-YM (blue) or 27f-Mix (red) forward primers. **a** Baby N-BF: Data shows the mean percentage of sequences in each bacterial family after 15 separate DNA extractions at seven time points. **b** Baby C-MF: Data shows the mean percentage of sequences in each bacterial family after six separate DNA extractions at three time points. For both panels, individual data points are plotted as open circles; centre lines in the box plots show the medians; crosses represent sample means; box limits indicate the 25th and 75th percentiles as determined by R software; whiskers extend 1.5 times the interquartile range from the 25th and 75th percentiles, outliers are represented by dots. Plotted using BoxPlotR [52]

(98 % similarity) in the 5-week sample (Additional file 1: Table S2). Neither of these *Clostridium* species would have been detected with the specific FISH probes used. Although these species can be associated with an “unhealthy” gut status in adults, in contrast, there are a number of reports indicating the common presence of such bacteria, and even of *Clostridium difficile*, in seemingly healthy infants [12, 39, 40].

The bifidobacteria detected using the bifidobacteria-specific primer sets split between two operational taxonomic units (OTUs)—99.7 % *Bifidobacterium longum* and 0.3 % *Bifidobacterium adolescentis* (Additional file 1: Table S2). This correlates with the known abundance of the *B. longum* group, which includes *B. longum* subsp. *infantis*, in the infant microbiota [24]. In the purely breast-fed baby, >99 % of the total bifidobacteria



sequences had a 100 % sequence match to *B. longum*. However, in the mixed-fed baby (C-MF), this was not the only *Bifidobacterium* species represented. *B. adolescentis*, commonly associated with adults but also identified in infants [41], formed >10 % of the bifidobacterial sequences from week 6 onwards, coinciding with the introduction of formula-feeding.

Conclusions

Here, we present further evidence that the under-representation of *Actinobacteria* in many culture-independent analyses of the gut microbiota is a consequence of poor DNA extraction techniques, poor PCR primer choice or a combination of both. This issue applies equally to adult samples, where bifidobacteria and other *Actinobacteria* typically comprise less than 10 % of the microbiota [18–21, 42], but it becomes critically important

when studying infants, particularly breast-fed infants, where the *Bifidobacterium* genus normally comprises in excess of 50 % of the microbiota. For example, a previous study indicated that bifidobacteria were a minor component of the faecal microbiota in both infants and adults [23], a finding that was in stark contrast to numerous other studies. Here, we clearly demonstrate that DNA extracted using method 2 (the QIAamp DNA extraction kit used by Palmer et al. [23]) contains no detectable bifidobacterial DNA sequences, whereas the same sample, extracted using a different method involving mechanical lysis, was dominated by bifidobacteria.

Several studies have now been published that provide evidence consistent with the present findings [43]. Maukonen et al. performed a detailed study comparing various commercial DNA extraction kits (including the two used here), concluding that numbers of bifidobacteria

were as much as three logs higher when the DNA extraction method included a mechanical cell lysis step rather than simply an enzymatic process [25]. Interestingly, they also showed that the composition within both the *Lachnospiraceae* and *Ruminococcaceae* families was influenced by whether enzymatic or mechanical lysis preceded DNA extraction [25]. Different microbiota profiles for the same sample have also been reported between different kits that rely on mechanical disruption [27]. Ultimately, the optimal DNA extraction method has to be a balance between extracting as much DNA as possible from the sample without biasing the extraction towards particular taxa. Of five DNA extraction kits compared by Claassen et al. [26], each was “best” at facilitating detection of a different bacterial genus of the three genera they focussed on.

The chosen PCR primer sequences are also critical determinants of the final bacterial sequence profiles. It was previously demonstrated that degenerate primers are necessary for effective recovery of bifidobacterial sequences using variable regions V3–V5 of the 16S rRNA gene [33]. Here, we show that bacterial primers for the commonly targeted V1–V3 regions of the 16S rRNA gene also require modifications for effective recovery of bifidobacteria. The primers used in many analyses of the composition of the gut microbiota comprise of only the 27f forward primer, which, as shown here and in other publications, clearly has a bias towards poorer amplification of *Actinobacteria* (and thus *Bifidobacterium*) compared to other bacterial genera [28, 32]. Although it has been known for more than 20 years that universal primers targeting the 16S rRNA gene have limitations related to binding and amplification bias (reviewed by [34]), again some compromise may be necessary to detect as much of the bacterial diversity as possible. Combining the degenerate 27f-YM primer with additional primers, specifically modified to target groups with mismatches to the 27f sequence overcame the problem of underrepresentation of these bacteria. To avoid the inconvenience of ordering multiple forward primers and then mixing prior to PCR amplification, a primer configuration of AGMGTTYGATYMTGGCTCAG would widen specificity in the same way as the mixed primer set used here, compared to the commonly used 27f primer that has no degenerate bases.

The microbial composition we observed in the single breast-fed compared to formula-fed baby is in agreement with the majority of the literature on this subject. In previous studies, the abundance of *Bacteroides* was found to be greater relative to bifidobacteria in formula-fed infants [11], and a rapid increase was reported in the diversity of the microbiota following the introduction of a single bottle of formula-feeding [7]. In the data presented here, gaps in the bacterial composition apparent in the FISH data were identified using the mixed primer

16S rRNA gene sequencing data, while the FISH data confirmed the relative abundance of the bifidobacteria genus in the respective samples from the two babies. Thus, this work emphasises the critical impact sample processing methodology has on sequence data and shows how the use of multiple detection methods enables results to be cross-validated, giving additional confidence in the data generated.

Methods

Volunteer recruitment

Babies born to staff or friends of staff at the Rowett Institute were recruited and stool samples collected from nappies provided by the parents on a 1–2 weekly basis, prior to weaning. The detailed study of two babies presented here was part of a larger ongoing study, carried out with full ethical approval (study number 08/001—RINH Human Studies Ethical Review Committee). Full written consent was obtained from at least one parent prior to collection of any samples. Samples were stored at 4 °C and processed within 6 h of defaecation. Baby N-BF was a natural birth, and was exclusively breast-fed until weaning. Baby C-MF was a C-section birth and had mixed-feeding (one bottle of formula milk per day was introduced from 5 weeks old, with exclusive breast-feeding prior to that and exclusive formula-feeding from 11 weeks old). Neither baby received antibiotics during the study period.

Sample processing

All faecal samples were initially placed inside a sterile plastic bag and hand-homogenised to a uniform consistency, and DNA was routinely extracted directly from 0.3 g of this fresh faecal material using the FastDNA SPIN Kit for Soil (MP Biomedicals), following the manufacturer’s instructions. In order to compare certain parameters of the extraction procedure, in some cases, DNA was extracted from both 0.3 and 0.5 g aliquots, either immediately or from frozen aliquots, and the sample was homogenised for either 30 s, 2 min or 5 min (in 30 s bursts, with intermittent cooling on ice). Assessing DNA yield using the Nanodrop (Nanodrop ND-1000 Spectrophotometer, Thermo Scientific) indicated that more than twice as much DNA (251 ng/μl compared to 108 ng/μl and 111 ng/μl compared to 46 ng/μl for the two samples tested) was obtained using the smaller, 0.3 g, starting samples, and this weight was subsequently routinely used. Finally, DNA was also extracted from a subset of identical samples using the widely used QIAamp DNA stool Mini Kit (QIAGEN no. 51504), directly following the manufacturer’s protocol.

Extracted DNA was used as a template for PCR amplification of bacterial 16S rRNA genes (four 25 μl reactions per sample, using 2 μl DNA per 25 μl reaction).

Various different PCR primer combinations, also incorporating 12-mer Golay barcodes and 454 adaptor sequences to allow multiplexing and sequencing on the 454 sequencing platform using the Lib-L sequencing kit, were used (Tables 1 and 2). In brief, samples amplified with “27f-YM” used a single forward primer (*CCTA TCCCCTGTGTGCCTTGGCAGTCTCAGAGAGTTG ATYMTGGCTCAG*, where the letters in italics show the 454 Lib-L “B” adaptor sequence and those in normal font show the 16S rRNA gene binding sequence), those with “27f-Mix” used a combination of five forward primers; 27f-YM (configuration as shown above), 27f-Chl (*CCTATCCCCTGTGTGCCTTGGCAGTCTCAGAGAAT TTGATCTTGTTTCAG*), 27f-Bor (*CCTATCCCCTGTG TGCCTTGGCAGTCTCAGAGAGTTTGCCTTGGCT TAG*), 27f-Bif (*CCTATCCCCTGTGTGCCTTGGCAGTC TCAGAGGGTTTCGATTCTGGCTCAG*), 27f-Ato (*CCT ATCCCCTGTGTGCCTTGGCAGTCTCAGAGAGTTTCG ATCCTGGCTCAG*) and those with “27f-BiP” used a single forward primer over the same priming region as the other 27f primers that is optimised for the *Bifidobacteriales* group (configuration as shown for 27f-Bif above). All combinations of the 27f primer were used in conjunction with a fusion version of primer 534r (*CCATCTCATCCCTGCGTGTCTCCGACTCAG*-barcode-*ATTACCGCGGCTGCTGG*, where the letters in normal font show the 16S rRNA gene priming region, those in italics show 454 Lib-L adaptor “A”, and “-barcode-” indicates where individual unique 12-base Golay barcodes were used for each sample). As a further control, a bifidobacteria-specific primer set was also included. The forward primer was Bif164f (*CCTATCCCCTGTGTGCCT TGGCAGTCTCAGGGGTGGTAATGCCGGATG*, where the letters in italics show the 454 Lib-L “B” adaptor sequence and those in normal font show the bifidobacterial 16S rRNA gene binding sequence), and the reverse primer was Bif662r (*CCATCTCATCCCTGCGTGTCTCC GACTCAG*-barcode-*CCACCGTTACACCGGGAA*, where the letters in normal font show the bifidobacterial 16S rRNA gene priming region, those in italics show 454 Lib-L adaptor “A”, and “-barcode-” indicates where individual unique 12-base Golay barcodes were used for each sample). The Golay barcodes used for each of the sequenced samples are listed in Additional file 1: Table S1.

For Q-PCR amplification, extracted DNA was diluted to a concentration of 5 ng/μl in 5 ng/μl herring sperm DNA and amplified, in duplicate, using either universal bacterial primers or group-specific primers (Table 1). The amplification mix contained 2 μl DNA, 5 μl SYBR green ready mix (SIGMA 172–5121), 0.5 μl each primer (concentration 10 pmol/μl) and 2 μl sterile water. Amplification conditions were 1 cycle of 95 °C for 3 min, and 40 cycles of 95 °C for 5 s and 60 °C for 30 s using a Bio-Rad CFX 384 Real-time system. A final melt curve

analysis was done with an incremental temperature increase of 0.5 °C every 5 s from 65 °C to 95 °C. Relative bacterial concentrations in each sample were estimated by comparing the gene copy numbers calculated using standard curves prepared with appropriate control DNA (starting concentration 16.4 pmol/μl).

16S rRNA gene sequence analysis

The sequences were analysed using the mothur software package [44]. In brief, the data was first filtered using the “trim.seqs” command, where the reads were truncated once average quality scores dropped below 35 across a rolling window of 50 bases. All reads that were less than 200 bp in length, that had any mismatches to either the primer or barcode sequences or that had ambiguous base calls or had homopolymeric stretches of longer than 8 bases were removed. We then used the “chimera.perseus” command in mothur to check for and then remove putative chimeric reads [45]. Following these quality control steps, a total of 110,642 sequences remained (median of 850 per sample, mean of 1558 per sample, range 14 to 6194). We calculated the Good’s coverage estimates for all of the samples using mothur. This revealed that the average (mean) coverage for all samples was 99.2 % (standard deviation of 1.9 %), and the median coverage was 99.8 %. We were therefore able to make accurate comparisons between the babies, despite the differential read depth.

The refined set of sequences was then aligned to the reference SILVA database provided in mothur, a distance matrix generated, and then, OTUs were generated by clustering sequences using the average neighbour setting in mothur at 97 % similarity. Each OTU was assigned a taxonomic classification at all levels from phylum to genus using the reference Ribosomal Database Project (RDP) database provided in mothur. A cluster dendrogram, using the Yue and Clayton calculator, was generated in mothur from the family-level classification data and was visualised using the iTOL web package [46]. *Bifidobacteriaceae* data generated using the 27f-YM and 27f-Mix primers were compared in detail by ANOVA with baby and week nested within baby as random effects and with primer as fixed effect.

Bacterial enumeration using FISH

Fresh faecal samples (0.5 g aliquot) were fixed in paraformaldehyde [47] prior to using 16S rRNA-targeted fluorescent probes to detect the predominant groups of human faecal bacteria. The probes used were Eub338 (total bacterial count), Erec482 (*Lachnospiraceae*), Fprau645 (*Faecalibacterium prausnitzii* group), Bif164 (*Bifidobacterium* genus), Rfla729 + Rbro730 (*Ruminococcus flavefaciens* and *Ruminococcus bromii* subclusters), Prop853 (*Veillonellaceae*), Bac303 (*Bacteroides-Prevotella* group),

LAB158 (*Lactobacillaceae* and *Enterococcaceae*) and EntD (*Enterobacteriaceae*). These probes have all been validated previously [36, 48, 49], and hybridisation was carried out using standard methods [47, 50, 53]. Cells were counted automatically using Cell[^]F software linked to an Olympus BX61 upright fluorescent microscope (Olympus UK Ltd).

Availability of supporting data

Raw sequence data is available from the European Nucleotide Archive, under study accession numbers ERP005250 and ERP004372/sample accession numbers ERS421602 and ERS373498 (see Additional file 1: Table S1 for barcode information). Further supplementary data is available in additional files linked to this article.

Additional file

Additional file 1: Supplemental figures and tables. **Figure S1.** 16S rRNA gene copy number calculated for each Q-PCR primer set, applying different bead-beating times. **Figure S2.** Proportional abundances of different bacterial phyla (A) and genera (B) detected using the 27f-Mix primer set, on DNA extracted using the FastDNA SPIN Kit for Soil, applying different bead-beating times. **Figure S3.** Effect of DNA extraction method and sample storage on bacterial profile detected using primer sets 27f-YM and 27f-Mix. **Figure S4.** Total Bacterial count in pre-weaned babies, detected using FISH probe Eub338. **Figure S5.** Bacteria detected in pre-weaning samples from two babies by FISH. **Table S1.** Golay barcode tags used for 16S rRNA gene pyrosequencing. **Table S2.** Proportional abundance (in %) of each OTU per sample (97 % OTU cut-off).

Abbreviations

DGGE: denaturing gradient gel electrophoresis; FISH: fluorescent in situ hybridisation; OTUs: operational taxonomic units; Q-PCR: quantitative real-time PCR.

Competing interests

The authors declare that they have no competing interests.

Authors' contributions

KPS, AWW and HJF conceived and designed the experiments. JCM and PS performed the experiments. AWW, KPS and JCM analysed the data. JP and HJF provided the critical logistical resources and support. KPS, AWW and HJF wrote the paper. All authors read and approved the final manuscript.

Acknowledgements

The authors acknowledge the assistance of Grietje Holtrop (RINH-BioSS) with the statistical analysis of the data and the Wellcome Trust Sanger Institute's 454 pyrosequencing team for generating 16S rRNA gene data. AWW, PS and JP received core funding support from the Wellcome Trust [grant number 098051]. AWW, JCM, HJF and KPS are funded by the Scottish Government (SG-RESAS).

Author details

¹Microbiology Group, Rowett Institute of Nutrition and Health, University of Aberdeen, Aberdeen AB21 9SB, UK. ²Pathogen Genomics Group, Wellcome Trust Sanger Institute, Wellcome Trust Genome Campus, Hinxton, Cambridgeshire CB10 1SA, UK.

Received: 14 January 2015 Accepted: 4 June 2015

Published online: 22 June 2015

References

- Mulder IE, Schmidt B, Lewis M, Delday M, Stokes CR, Bailey M, Aminov RI, Gill BP, Pluske JR, Mayer C-D, Kelly D. Restricting microbial exposure in early life negates the immune benefits associated with gut colonization in environments of high microbial diversity. *PLoS ONE* 2011, 6(12); doi:10.1371/journal.pone.0028279.
- Russell SL, Gold MJ, Hartmann M, Willing BP, Thorsen L, Wlodarska M, et al. Early life antibiotic-driven changes in microbiota enhance susceptibility to allergic asthma. *EMBO Rep.* 2012;13(5):440–7.
- Cox L, Yamanishi S, Sohn J, Alekseyenko A, Leung J, Cho I, et al. Altering the intestinal microbiota during a critical developmental window has lasting metabolic consequences. *Cell.* 2014;158(4):705–21.
- Vallès Y, Artacho A, Pascual-García A, Ferrús ML, Gosalbes MJ, Abellán JJ, Francino MP. Microbial succession in the gut: directional trends of taxonomic and functional change in a birth cohort of Spanish infants. *PLoS Genetics* 2014, 10(6); doi:10.1371/journal.pgen.1004406.
- Stark PL, Lee A. The microbial ecology of the large bowel of breast-fed and formula-fed infants during the first year of life. *J Med Microbiol.* 1982;15(2):189–203.
- Dai D, Walker WA. Protective nutrients and bacterial colonization in the immature human gut. *Adv Pediatr.* 1999;46:353–82.
- Mackie RI, Sghir A, Gaskins HR. Developmental microbial ecology of the neonatal gastrointestinal tract. *Am J Clin Nutr.* 1999;69(5):1035S–45S.
- Yoshioka H, Iseki K, Fujita K. Development and differences of intestinal flora in the neonatal period in breast-fed and bottle-fed infants. *Pediatrics.* 1983;72(3):317–21.
- Favier CF, Vaughan EE, De Vos WM, Akkermans ADL. Molecular monitoring of succession of bacterial communities in human neonates. *Appl Environ Microbiol.* 2002;68(1):219–26.
- Penders J, Thijs C, Vink C, Stelma FF, Snijders B, Kummeling I, et al. Factors influencing the composition of the intestinal microbiota in early infancy. *Pediatrics.* 2006;118(2):511–21.
- Harmsen HJM, Wildeboer-Veloo ACM, Raangs GC, Wagendorp AA, Klijn N, Bindels JG, et al. Analysis of intestinal flora development in breast-fed and formula-fed infants by using molecular identification and detection methods. *J Pediatr Gastroenterol Nutr.* 2000;30(1):61–7.
- Fallani M, Amarri S, Uusijarvi A, Adam R, Khanna S, Aguilera M, et al. Determinants of the human infant intestinal microbiota after the introduction of first complementary foods in infant samples from five European centres. *Microbiology.* 2011;157(5):1385–92.
- Zivkovic AM, German JB, Lebrilla CB, Mills DA. Human milk glycomiome and its impact on the infant gastrointestinal microbiota. *Proc Natl Acad Sci U S A.* 2011;108 Suppl 1:4653–8.
- Sela DA, Chapman J, Adeyua A, Kim JH, Chen F, Whitehead TR, et al. The genome sequence of *Bifidobacterium longum* subsp. *infantis* reveals adaptations for milk utilization within the infant microbiome. *Proc Natl Acad Sci USA.* 2008;105(48):18964–9.
- Koenig JE, Spor A, Scalfone N, Fricker AD, Stombaugh J, Knight R, et al. Succession of microbial consortia in the developing infant gut microbiome. *Proc Natl Acad Sci U S A.* 2011;108 Suppl 1:4578–85.
- Yatsunen T, Rey FE, Manary MJ, Trehan I, Dominguez-Bello MG, Contreras M, et al. Human gut microbiome viewed across age and geography. *Nature.* 2012;486(7402):222–7.
- Hold GL, Pryde SE, Russell VJ, Furrer E, Flint HJ. Assessment of microbial diversity in human colonic samples by 16S rDNA sequence analysis. *FEMS Microbiol Ecol.* 2002;39(1):33–9.
- Suau A, Bonnet R, Sutren M, Godon J, Gibson GR, Collins MD, et al. Direct analysis of genes encoding 16S rRNA from complex communities reveals many novel molecular species within the human gut. *Appl Environ Microbiol.* 1999;65(11):4799–807.
- Eckburg PB, Bik EM, Bernstein CN, Purdom E, Dethlefsen L, Sargent M, et al. Microbiology: diversity of the human intestinal microbial flora. *Science.* 2005;308(5728):1635–8.
- Walker AW, Ince J, Duncan SH, Webster LM, Holtrop G, Ze X, et al. Dominant and diet-responsive groups of bacteria within the human colonic microbiota. *ISME J.* 2011;5(2):220–30.
- Methé BA, Nelson KE, Pop M, Creasy HH, Giglio MG, Huttenhower C, et al. A framework for human microbiome research. *Nature.* 2012;486(7402):215–21.
- Dominguez-Bello MG, Costello EK, Contreras M, Magris M, Hidalgo G, Fierer N, et al. Delivery mode shapes the acquisition and structure of the initial microbiota across multiple body habitats in newborns. *Proc Natl Acad Sci U S A.* 2010;107(26):11971–5.
- Palmer C, Bik EM, DiGiulio DB, Relman DA, Brown PO. Development of the human infant intestinal microbiota. *PLoS Biol.* 2007;5(7), e177.

24. Turrone F, Peano C, Pass DA, Foroni E, Severgnini M, Claesson MJ, Kerr C, Hourihane J, Murray D, Fuligni F, Gueimonde M, Margolles A, de Bellis G, O'Toole PW, van Sinderen D, Marchesi JR, Ventura M. Diversity of bifidobacteria within the infant gut microbiota. *PLoS ONE* 2012, 7(5); doi:10.1371/journal.pone.0036957.
25. Maukonen J, Simões C, Saarela M. The currently used commercial DNA-extraction methods give different results of clostridial and actinobacterial populations derived from human fecal samples. *FEMS Microbiol Ecol.* 2012;79(3):697–708.
26. Claassen S, du Toit E, Kaba M, Moodley C, Zar HJ, Nicol MP. A comparison of the efficiency of five different commercial DNA extraction kits for extraction of DNA from faecal samples. *J Microbiol Methods.* 2013;94(2):103–10.
27. Kennedy NA, Walker AW, Berry SH, Duncan SH, Farquarson FM, Louis P, Thomson JM, Satsangi J, Flint HJ, Parkhill J, Lees CW, Hold GL. The impact of different DNA extraction kits and laboratories upon the assessment of human gut microbiota composition by 16S rRNA gene sequencing. *PLoS ONE* 2014, 9(2); doi:10.1371/journal.pone.0088982.
28. Farris MH, Olson JB. Detection of Actinobacteria cultivated from environmental samples reveals bias in universal primers. *Lett Appl Microbiol.* 2007;45(4):376–81.
29. Hill JE, Ursula Fernando WM, Zello GA, Tyler RT, Dahl WJ, Van Kessel AG. Improvement of the representation of bifidobacteria in fecal microbiota metagenomic libraries by application of the cpn60 universal primer cocktail. *Appl Environ Microbiol.* 2010;76(13):4550–2.
30. Milani C, Hevia A, Foroni E, Duranti S, Turrone F, Lugli GA, Sanchez B, Martín R, Gueimonde M, van Sinderen D, Margolles A, Ventura M. Assessing the fecal microbiota: an optimized ion torrent 16S rRNA gene-based analysis protocol. *PLoS ONE* 2013, 8(7); doi:10.1371/journal.pone.0068739.
31. Milani C, Lugli GA, Duranti S, Turrone F, Bottacini F, Mangifesta M, et al. Genomic encyclopedia of type strains of the genus *Bifidobacterium*. *Appl Environ Microbiol.* 2014;80(20):6290–302.
32. Frank JA, Reich CI, Sharma S, Weisbaum JS, Wilson BA, Olsen GJ. Critical evaluation of two primers commonly used for amplification of bacterial 16S rRNA genes. *Appl Environ Microbiol.* 2008;74(8):2461–70.
33. Sim K, Cox MJ, Wopereis H, Martin R, Knol J, Li M, et al. Improved detection of bifidobacteria with optimised 16S rRNA-gene based pyrosequencing. *PLoS One.* 2012;7(3), e32543.
34. von Wintzingerode F, Gobel UB, Stackebrandt E. Determination of microbial diversity in environmental samples: pitfalls of PCR-based rRNA analysis. *FEMS Microbiol Rev.* 1997;21(3):213–29.
35. Satokari RM, Vaughan EE, Akkermans ADL, Saarela M, De Vos WM. Bifidobacterial diversity in human feces detected by genus-specific PCR and denaturing gradient gel electrophoresis. *Appl Environ Microbiol.* 2001;67(2):504–13.
36. Walker AW, Duncan SH, McWilliam Leitch EC, Child MW, Flint HJ. pH and peptide supply can radically alter bacterial populations and short-chain fatty acid ratios within microbial communities from the human colon. *Appl Environ Microbiol.* 2005;71(7):3692–700.
37. Satokari RM, Vaughan EE, Favier CF, Doré J, Edwards C, De Vos WM. Diversity of *Bifidobacterium* and *Lactobacillus* spp. in breast-fed and formula-fed infants as assessed by 16S rDNA sequence differences. *Microb Ecol Health Dis.* 2002;14(2):97–105.
38. Fallani M, Young D, Scott J, Norin E, Amarri S, Adam R, et al. Intestinal microbiota of 6-week-old infants across Europe: geographic influence beyond delivery mode, breast-feeding, and antibiotics. *J Pediatr Gastroenterol Nutr.* 2010;51(1):77–84.
39. Cooperstock M, Riegler L, Woodruff CW, Onderdonk A. Influence of age, sex, and diet on asymptomatic colonization of infants with *Clostridium difficile*. *J Clin Microbiol.* 1983;17(5):830–3.
40. Rousseau C, Levenez F, Fouqueray C, Doré J, Collignon A, Lepage P. *Clostridium difficile* colonization in early infancy is accompanied by changes in intestinal microbiota composition. *J Clin Microbiol.* 2011;49(3):858–65.
41. Turrone F, Foroni E, Pizzetti P, Giubellini V, Ribbera A, Merusi P, et al. Exploring the diversity of the bifidobacterial population in the human intestinal tract. *Appl Environ Microbiol.* 2009;75(6):1534–45.
42. Tap J, Mondot S, Levenez F, Pelletier E, Caron C, Furet JP, et al. Towards the human intestinal microbiota phylogenetic core. *Environ Microbiol.* 2009;11(10):2574–84.
43. Radomski N, Kreitmann L, McIntosh F, Behr MA. The critical role of DNA extraction for detection of mycobacteria in tissues. *PLoS ONE* 2013, 8(10); doi:10.1371/journal.pone.0078749.
44. Schloss PD, Westcott SL, Ryabin T, Hall JR, Hartmann M, Hollister EB, et al. Introducing mothur: open-source, platform-independent, community-supported software for describing and comparing microbial communities. *Appl Environ Microbiol.* 2009;75(23):7537–41.
45. Quince C, Lanzen A, Davenport RJ, Turnbaugh PJ. Removing noise from pyrosequenced amplicons. *BMC Bioinformatics.* 2011;12.
46. Letunic I, Bork P. Interactive Tree Of Life v2: Online annotation and display of phylogenetic trees made easy. *Nucleic Acids Res.* 2011;39 Suppl 2:W475–8.
47. Duncan SH, Belonguer A, Holtrop G, Johnstone AM, Flint HJ, Lobley GE. Reduced dietary intake of carbohydrates by obese subjects results in decreased concentrations of butyrate and butyrate-producing bacteria in feces. *Appl Environ Microbiol.* 2007;73(4):1073–8.
48. Harmsen HJM, Elferich P, Schut F, Welling GW. A 16S rRNA-targeted probe for detection of lactobacilli and enterococci in faecal samples by fluorescent in situ hybridization. *Microb Ecol Health Dis.* 1999;11(1):3–12.
49. Harmsen HJM, Raangs GC, He T, Degener JE, Welling GW. Extensive set of 16S rRNA-based probes for detection of bacteria in human feces. *Appl Environ Microbiol.* 2002;68(6):2982–90.
50. Franks AH, Harmsen HJM, Raangs GC, Jansen GJ, Schut F, Welling GW. Variations of bacterial populations in human feces measured by fluorescent in situ hybridization with group-specific 16S rRNA-targeted oligonucleotide probes. *Appl Environ Microbiol.* 1998;64(9):3336–45.
51. Ramirez-Farias C, Slezak K, Fuller Z, Duncan A, Holtrop G, Louis P. Effect of inulin on the human gut microbiota: stimulation of *Bifidobacterium adolescentis* and *Faecalibacterium prausnitzii*. *Br J Nutr.* 2009;101:541–50.
52. Spitzer M, Wildenhain J, Rappsilber J, Tyers M. BoxPlotR: a web tool for generation of box plots. *Nat Methods.* 2014;11:121–2.
53. Jansen GJ, Wildeboer-Veloo ACM, Tonk RHJ, Franks AH, Welling GW. Development and validation of an automated, microscopy-based method for enumeration of groups of intestinal bacteria. *J Microbiol Methods.* 1999;37(3):215–21.
54. Generalized Draft form of HMP Data Generation Working Group 16S 454 Default Protocol Version 4.2- Pilot Study http://www.hmpdacc.org/doc/HMP_MDG_454_16S_Protocol.pdf.
55. Muzzer G, De Waal EC, Uitterlinden AG. Profiling of complex microbial populations by denaturing gradient gel electrophoresis analysis of polymerase chain reaction-amplified genes coding for 16S rRNA. *Appl Environ Microbiol.* 1993;59(3):695–700.
56. Rinttilä T, Kassinen A, Malinen E, Krogius L, Palva A. Development of an extensive set of 16S rDNA-targeted primers for quantification of pathogenic and indigenous bacteria in faecal samples by real-time PCR. *J Appl Microbiol.* 2004;97(6):1166–77.
57. Fuller Z, Louis P, Mihajlovski A, Rungapamestry V, Ratcliffe B, Duncan AJ. Influence of cabbage processing methods and prebiotic manipulation of colonic microflora on glucosinolate breakdown in man. *Brit J Nutr.* 2007;98(2):364–72.
58. Bartosch S, Fite A, Macfarlane GT, McMurdo MET. Characterization of bacterial communities in feces from healthy volunteers and hospitalized elderly patients by using real-time PCR and effects of antibiotic treatment on the fecal microbiota. *Appl Environ Microbiol.* 2004;70:3575–81.

Submit your next manuscript to BioMed Central and take full advantage of:

- Convenient online submission
- Thorough peer review
- No space constraints or color figure charges
- Immediate publication on acceptance
- Inclusion in PubMed, CAS, Scopus and Google Scholar
- Research which is freely available for redistribution

Submit your manuscript at
www.biomedcentral.com/submit

